



£325,000
28 Chatsworth Avenue
Cosham, PO6 2UQ

We are delighted to welcome to the market this extended and well-presented three bedroom family home situated in the sought after location of Chatsworth Avenue, Cosham. The property is located a short distance from Cosham Railway Station, local school, bus routes, motorway links, recreation grounds and shopping amenities. The accommodation briefly comprising of - entrance hall, lounge, dining room, sun lounge/ playroom, spacious kitchen, reception room/ sun lounge, downstairs shower/cloakroom, three bedrooms and family bathroom. Externally the front of the property offers off road parking. At the rear there is an enclosed garden which is mainly laid to lawn with sections of patio. Viewing is strongly recommended to fully appreciate the accommodation and location on offer here.

- 3 
- 1 
- 2 





ENTRANCE HALL 11' 1" x 6' 2" (3.38m x 1.88m)

LOUNGE 15' 10" x 11' 2" (4.83m x 3.4m)

DINING ROOM 14' 7" x 12' 8" (4.44m x 3.86m)

SUN ROOM 9' 4" x 7' 2" (2.84m x 2.18m)

KITCHEN 16' 11" x 9' 11" (5.16m x 3.02m)

RECEPTION ROOM/SUN ROOM 10' 10" x 10' 8" (3.3m x 3.25m)

SHOWER ROOM 5' 8" x 2' 11" (1.73m x 0.89m)

LANDING

BEDROOM ONE 12' 8" x 11' 9" (3.86m x 3.58m)

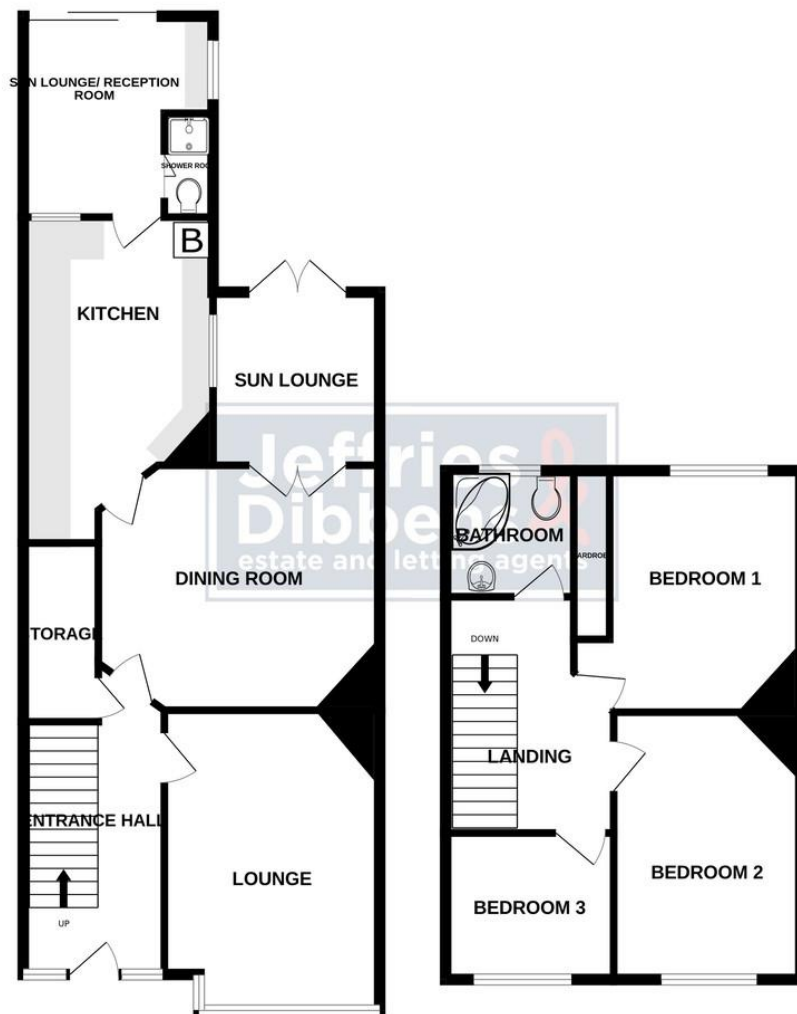
BEDROOM TWO 13' 0" x 9' 9" (3.96m x 2.97m)

BEDROOM THREE 8' 0" x 7' 11" (2.44m x 2.41m)

BATHROOM 8' 3" x 5' 11" (2.51m x 1.8m)

GARDEN





LOCAL AUTHORITY
Portsmouth City Council

TENURE
Freehold

COUNCIL TAX BAND
Band C

VIEWINGS
By prior appointment only

EPC To Follow

Agents Note: Whilst every care has been taken to prepare these particulars, they are for guidance purposes only. All measurements are approximate and are for general guidance purposes only and whilst every care has been taken to ensure their accuracy, they should not be relied upon and potential buyers/tenants are advised to recheck the measurements

**Jeffries
Dibbensen**
estate and letting agents

OFFICE ADDRESS

196 Havant Road, Drayton,
Portsmouth, Hampshire, PO6
2EH

CONTACT

023 9237 3341
drayton@jeffries.co.uk
www.jdea.co.uk