

20 FRANK MILES HOUSE  
1 SOMERS ROAD, SOUTHSEA,  
HAMPSHIRE, PO5 4PR



**£200,000** Leasehold

STUDENT INVESTMENT PROPERTY! Jeffries & Dibbens is delighted to offer for sale this four bedroom HMO found along Somers Road, Southsea with no forward chain. The property, which is currently let out to four students until August 2026, generates a monthly rental income of £1890pcm. Situated in a great central location for access to the university and Portsmouth city centre, with a host of amenities including Portsmouth & Southsea train station, which we feel makes this the ideal student let. Call Jeffries & Dibbens for more information and to arrange your internal viewing.



**jdea.co.uk**

**f** @JeffriesAndDibbens



JeffriesDibbens



@JeffriesAndDibbens

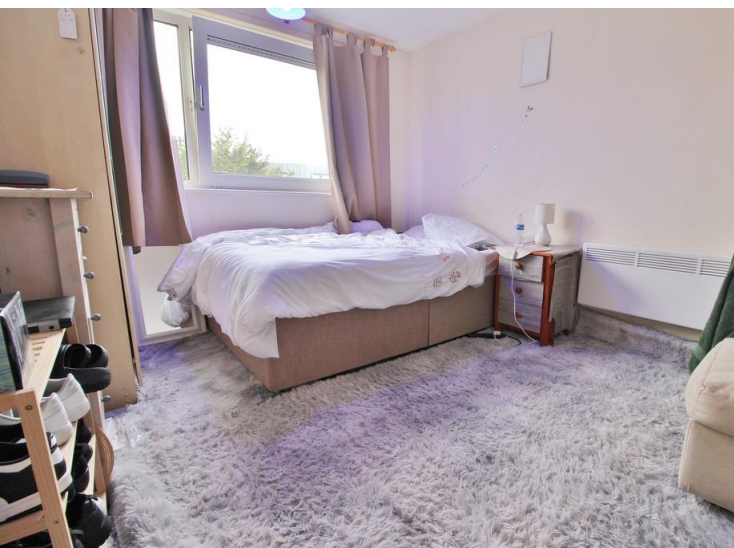


## ENTRANCE HALL

## WC

## KITCHEN/DINER

9' 6" x 15' 5" (2.90m x 4.72m)



## BEDROOM ONE

15' 10" x 12' 7" (4.85m x 3.84m)

## FIRST FLOOR LANDING

## BEDROOM FOUR

6' 9" x 11' 1" (2.06m x 3.38m)



## BEDROOM TWO

9' 2" x 14' 7" (2.80m x 4.45m)

## BEDROOM THREE

9' 10" x 12' 4" (3.02m x 3.78m)

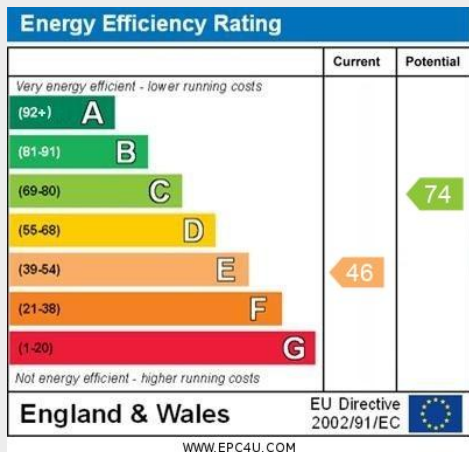
## BATHROOM

6' 1" x 5' 6" (1.86m x 1.70m)

## AGENTS NOTE:

## COUNCIL TAX

Band A.







# LEASE INFORMATION:



As of January 2026, the vendor has informed us that the lease details are as follows:-

**Tenure:** Leasehold.

**Landlord/Managing Agent:** Portsmouth City Council.

**Balance of Lease:** 87 years remaining.

**Ground Rent Charges:** £9.96 per annum.

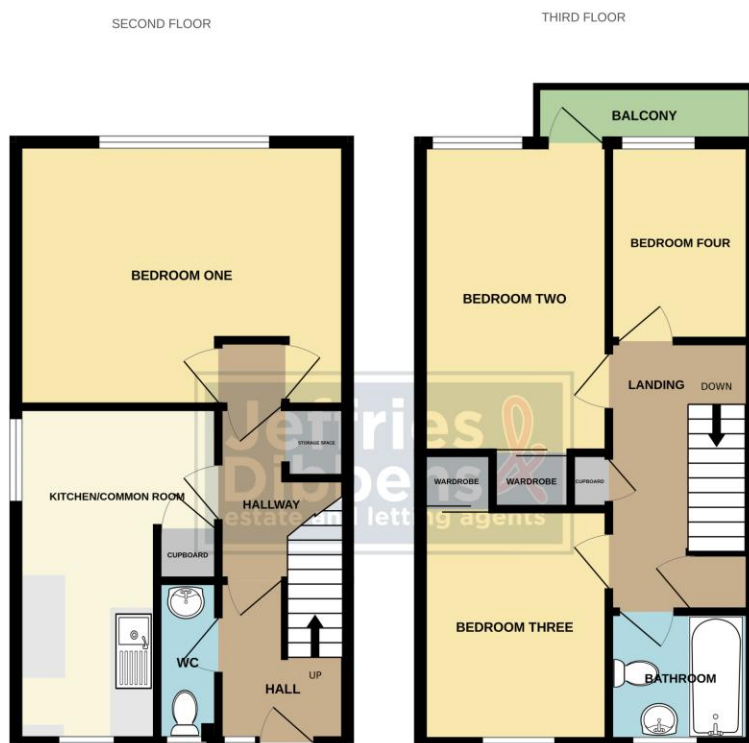
**Ground Rent Review Period:** TBC.

**Maintenance/Service Charges:** £2585.70 per annum.

**Maintenance /Service Charges Review Period:** TBC.

**Building Insurance:** Included in Maintenance/Service Charges.

Confirmation of all charges relating to this property should be confirmed by your solicitor prior to any exchanging of contracts.



Whilst every attempt has been made to ensure the accuracy of the floorplan contained here, measurements of doors, windows, rooms and any other items are approximate and no responsibility is taken for any error, omission or mis-statement. This plan is for illustrative purposes only and should be used as such by any prospective purchaser. The services, systems and appliances shown have not been tested and no guarantee as to their operability or efficiency can be given.  
Made with Metropix 5.0.0.20

## OFFICE ADDRESS

1 Marmion Road, Southsea, Hampshire,  
PO5 2DT

## OFFICE DETAILS

023 9236 1111  
southsea@jeffries.co.uk  
www.jdea.co.uk

**AGENTS' NOTE:** All measurements shown are approximate and may have been taken with a sonic measure and therefore should be verified. No electrical, mechanical or gas appliances have been tested by a representative of this company. These particulars do not constitute any part of an offer or contract. None of the statements contained in these particulars are to be relied on as statements or representations of fact and any intending purchaser must satisfy himself by inspection or otherwise to the correctness of each of the statements contained in these particulars. The Vendor does not make or give, and neither Jeffries & Dibbens nor any person in their employment has any authority to make or give, any representation or warranty whatever in relation to this property. Jeffries & Dibbens Ltd. Registered in England No. 3185348 registered office: 196 Havant Road, Drayton, Portsmouth, PO6 2EH