

12 FENTON COURT  
4-5 CRANESWATER PARK, SOUTHSEA,  
PO4 0NR



**£289,000** Leasehold

TWO BEDROOM APARTMENT WITH OFF ROAD PARKING & NO CHAIN! A stylish top floor apartment located in the highly sought after area of Craneswater Park and set within an impressive period building, which was completely re-modernised in 2006. The internal accommodation is well-presented throughout and briefly comprises; entrance hall with large storage cupboard, two double bedrooms (both with fitted wardrobes), fitted bathroom suite and en-suite shower room to master bedroom, fitted kitchen with integral appliances and a southerly aspect living room. Externally, you will find an allocated parking space, tended communal gardens, bike store and private outside cupboard. Situated just moments away from Canoe Lake and the seafront, we highly advise an internal viewing to appreciate the location and accommodation on offer.



**jdea.co.uk**

**f** @JeffriesAndDibbens

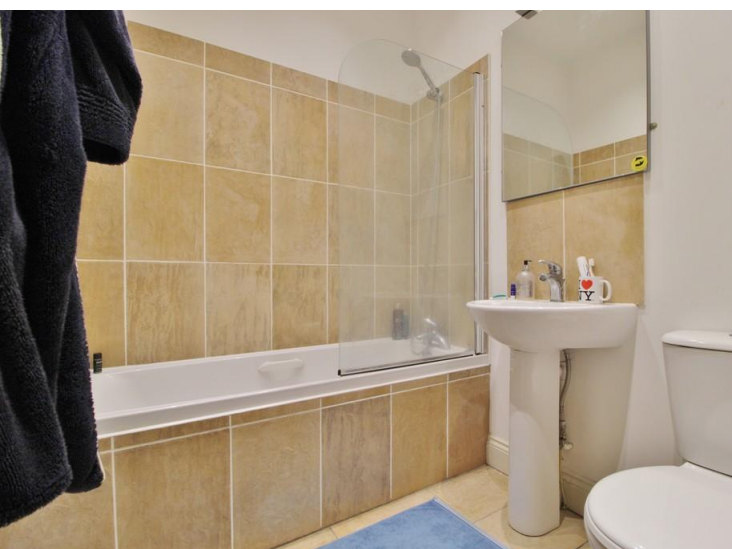


**JeffriesDibbens**



**@JeffriesAndDibbens**





Energy Efficiency Rating		
	Current	Potential
Very energy efficient - lower running costs		
(92+) <b>A</b>		
(81-91) <b>B</b>		
(69-80) <b>C</b>		
(55-68) <b>D</b>	57	62
(39-54) <b>E</b>		
(21-38) <b>F</b>		
(1-20) <b>G</b>		
Not energy efficient - higher running costs		
England & Wales	EU Directive 2002/91/EC	
WWW.EPC4U.COM		

## COMMUNAL ENTRANCE

Secure intercom system, door to:-

## COMMUNAL HALLWAY

Stairs to all floors, door to flat 12.

## HALLWAY

Doors to all rooms, storage cupboard, laminate flooring.

## BATHROOM

5' 9" x 6' 7" (1.76m x 2.01m)

Panel enclosed bath with central tap with shower attachment, low level WC, pedestal mounted wash basin, heated towel rail, tiled to principal areas and tiled flooring.

## BEDROOM ONE

15' 1" x 9' 9" (4.60m x 2.99m)

Dual aspect double glazed windows, carpeted, radiator, built-in wardrobes, door to:-

## EN-SUITE

5' 4" x 6' 8" (1.63m x 2.04m)

Shower cubicle with thermostatic mixer, low level WC, wall mounted wash basin, tiled to principal areas and tiled flooring, double glazed window to front elevation.

## BEDROOM TWO

13' 11" x 9' 10" (4.25m x 3.01m)

Double glazed window to side elevation, built-in wardrobes with wall mounted boiler, carpeted, radiator.

## LIVING ROOM

10' 2" x 16' 4" (3.11m x 4.98m)

Double glazed window to rear elevation, laminate flooring, radiator, sea vistas.

## KITCHEN

11' 4" x 6' 3" (3.47m x 1.91m)

Fitted kitchen comprising a range of wall and base level units incorporating roll edge work surfaces and stainless steel splashback, stainless steel sink and drainer unit with mixer tap, electric oven and gas hob with extractor hood, integral fridge/freezer, integral washing machine, tiled flooring.

## COMMUNAL GARDEN

## PARKING

One allocated parking space.

## OUTSIDE

Accessible communal outside store for bicycles and scooters.

## AGENTS NOTE:

## COUNCIL TAX

Band C.





# LEASE INFORMATION:



As of September 2024, the vendor has informed us that the lease details are as follows:-

**Tenure:** Leasehold

**Landlord/Managing Agent:** Pier Management/Fenton Court RTM

**Balance of Lease:** 109 years remaining

**Ground Rent Charges:** £150 per annum

**Ground Rent Review Period:** TBC

**Maintenance/Service Charges:** £1250 per annum

**Maintenance /Service Charges Review Period:** Annually

**Building Insurance:** Included in Maintenance/Service Charges

Confirmation of all charges relating to this property should be confirmed by your solicitor prior to any exchanging of contracts.



Whilst every attempt has been made to ensure the accuracy of the floorplan contained herein, measurements of floors, windows, rooms and any other items are approximate and no responsibility is taken for any error, omission or mis-statement. This plan is for illustrative purposes only and should be used as such by any prospective purchaser. The services, systems and appliances shown have not been tested and no guarantee as to their operability or efficiency can be given.  
Made with Metagix ©2024

## OFFICE ADDRESS

1 Marmion Road, Southsea, Hampshire,  
PO5 2DT

## OFFICE DETAILS

023 9236 1111  
southsea@jeffries.co.uk  
www.jdea.co.uk

**AGENTS' NOTE:** All measurements shown are approximate and may have been taken with a sonic measure and therefore should be verified. No electrical, mechanical or gas appliances have been tested by a representative of this company. These particulars do not constitute any part of an offer or contract. None of the statements contained in these particulars are to be relied on as statements or representations of fact and any intending purchaser must satisfy himself by inspection or otherwise to the correctness of each of the statements contained in these particulars. The Vendor does not make or give, and neither Jeffries & Dibbens nor any person in their employment has any authority to make or give, any representation or warranty whatever in relation to this property. Jeffries & Dibbens Ltd. Registered in England No. 3185348 registered office: 196 Havant Road, Drayton, Portsmouth, PO6 2EH