



£30,000
Garage 8 St. Chads Avenue
Portsmouth, PO2 0AY

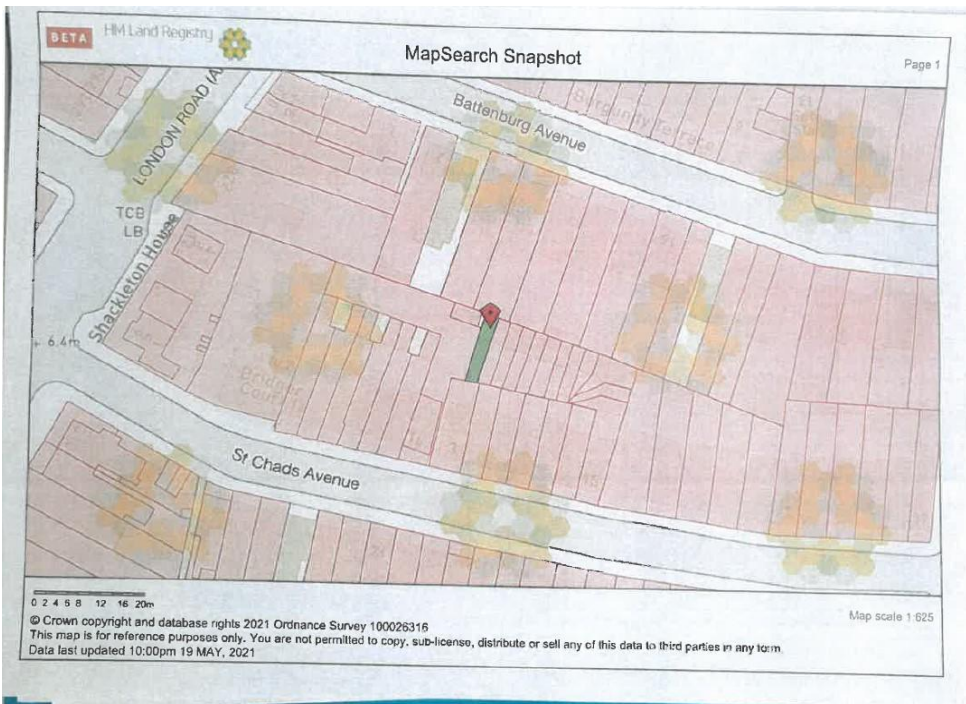
PROPERTY SUMMARY

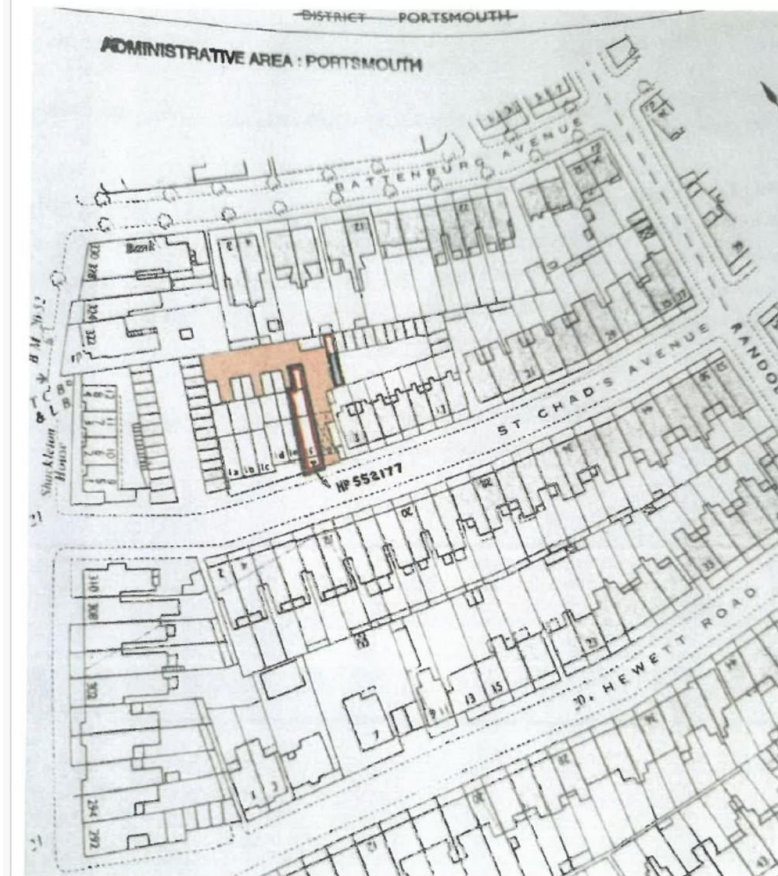
Garage & Off Road Parking Space. Jeffries & Dibbens are delighted to bring to the market this brick built garage located off of St Chads Avenue, North End with an additional off road parking space for one vehicle. The garage measures 15' 4 x 7' 11" and benefits from a raised storage area.





GARAGE 15' 4" x 7' 11" (4.67m x 2.41m) Metal up and over door, raised shelving area, raised wooden flooring and panelling, additional off road parking space located opposite the garage.





LOCAL AUTHORITY

Portsmouth

TENURE

Freehold

VIEWINGS

By prior appointment only

Agents Note: Whilst every care has been taken to prepare these particulars, they are for guidance purposes only. All measurements are approximate and are for general guidance purposes only and whilst every care has been taken to ensure their accuracy, they should not be relied upon and potential buyers/tenants are advised to recheck the measurements

**Jeffries
Dibbens** &
estate and letting agents

OFFICE ADDRESS

112/114 London Road,
Portsmouth, Hampshire, PO2
0LZ

CONTACT

023 9266 1662
portsmouth@jeffries.co.uk
www.jdea.co.uk