



Guide Price
£600,000

Freehold

4x  2x  2x 

**Monson Road, Redhill,
Surrey, RH1**

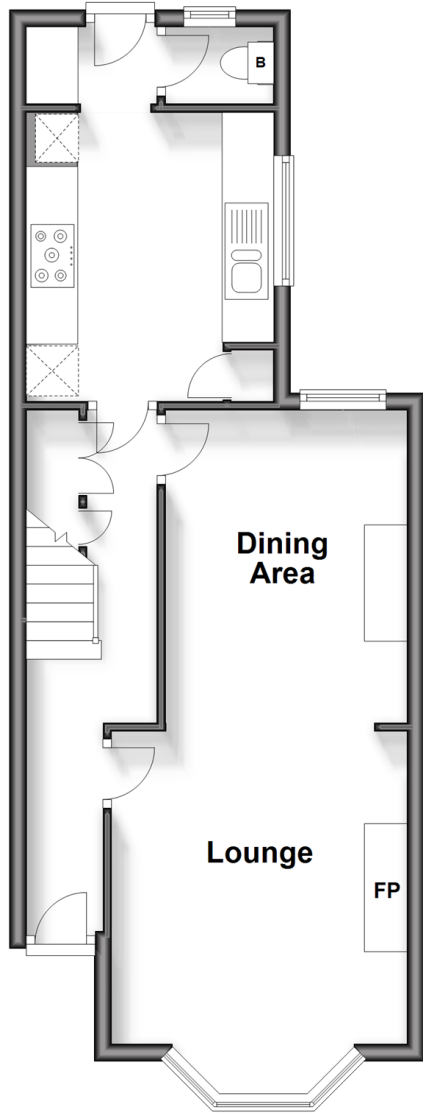
OVER 60?

Secure this property
for up to **59% less!**

cubitt&west
Helping you move forwards

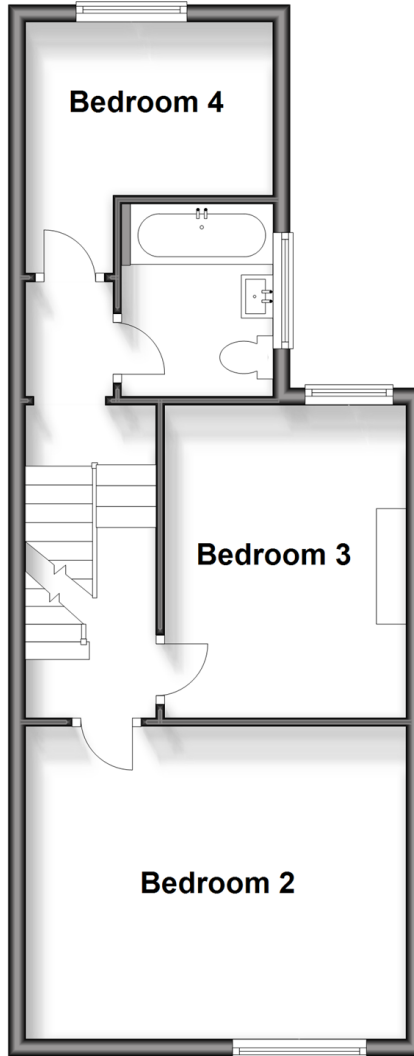
Ground Floor

Approx. 461.2 sq. feet



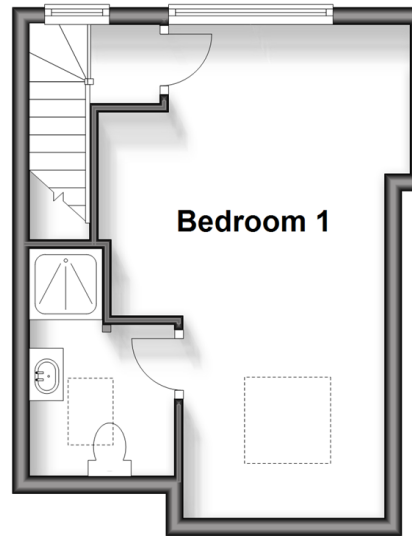
First Floor

Approx. 488.0 sq. feet



Second Floor

Approx. 250.9 sq. feet



Accommodation

GROUND FLOOR

Hallway

Lounge: 14'8 x 11'8 (4.47m x 3.56m)

Dining Area: 13'3 x 10'0 (4.04m x 3.05m)

Kitchen: 11'4 x 10'2 (3.46m x 3.10m)

Cloakroom

FIRST FLOOR

Landing

Bedroom 2: 13'9 x 12'4 (4.19m x 3.76m)

Bedroom 3: 12'3 x 9'9 (3.74m x 2.97m)

Bedroom 4: 9'9 x 9'4 (2.97m x 2.85m)

Bathroom

SECOND FLOOR

Landing

Bedroom 1: 18'9 maximum x 9'2 maximum (5.72m x 2.80m)

En-suite Shower Room: 8'0 x 5'3 (2.44m x 1.60m)

OUTSIDE

Workshop/Outbuilding

Rear Garden



Main features

- Semi detached house with driveway
- Great catchment to local schools
- Outside cabin with electricity
- Landscaped gardens
- Main bedroom with own floor and en-suite shower room



Nearest Schools

Primary Schools: St Matthew's CofE Primary 0.5 miles, Lime Tree Primary 0.6 miles, St Joseph's Catholic Primary, Redhill 1.0 miles
Secondary Schools: St Bede's School 0.7 miles, The Warwick School 1.2 miles, Dunottar Day School for Girls



Transport Information

Train Stations: Redhill 0.8 miles, Merstham 1.4 miles, Earlswood 1.8 miles



Address

Monson Road, Redhill, Surrey, RH1



Directions

For directions to this property please contact us.



cubitt&west
Helping you move forwards

Call Redhill Branch 01737 778866 ■ cubittandwest.co.uk



■ Legal advice should be taken to verify fixtures/fittings, planning, alterations and/or lease details ■ Appliances & services are untested, dimensions are approximate and floor plans are not to scale
■ Through a Homewise Home For Life Plan people aged 60+ can secure this property for up to 59% less, by purchasing a Lifetime Lease.



23405577/20240705/JB2/JB2