



**OVER 60?**

Secure this property  
for up to **59% less!**

**Price**

**£390,000**

**Leasehold**

2x  2x  1x 

**Picture House,  
Marketfield Way,  
Redhill, Surrey, RH1**

**cubitt&west**  
Helping you move forwards





## Main features

- Dual-aspect living/dining room with access to a private balcony
- Modern fitted kitchen with integrated appliances
- Convenient location just a stone's throw from transport links and the high street
- Rare allocated parking space included with the flat

## Accommodation

### SIXTH FLOOR

Entrance Hall

Lounge: 24'5 x 11'7 (7.45m x 3.53m)

Balcony

Kitchen: 13'2 x 7'3 (4.02m x 2.21m)

Bedroom 1: 10'6 x 9'0 (3.20m x 2.75m)

En Suite Shower Room: 5'6 x 5'3  
(1.68m x 1.60m)

Bedroom 2: 17'8 x 8'2 (5.39m x 2.49m)

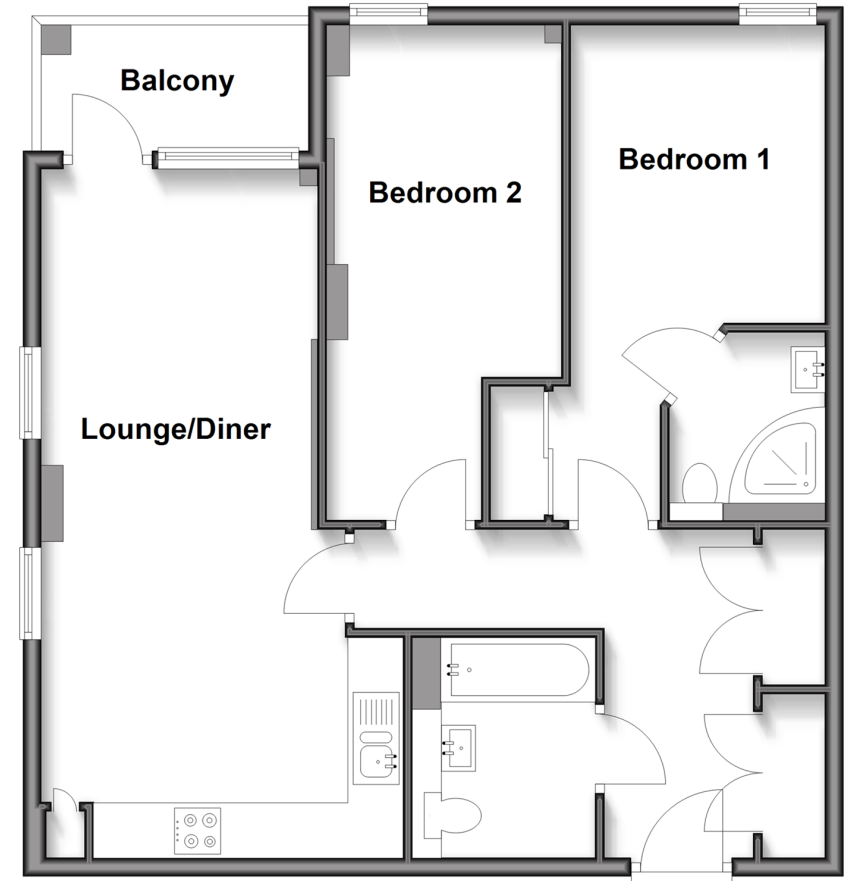
Bathroom: 7'5 x 5'5 (2.26m x 1.65m)

### OUTSIDE

Allocated Parking

## Sixth Floor

Approx. 72.1 sq. metres (776.0 sq. feet)



**Call Redhill - 01737 778866 ■ [cubittandwest.co.uk](http://cubittandwest.co.uk)**

- Legal advice should be taken to verify fixtures/fittings, planning, alterations and/or lease details
- Appliances & services are untested, dimensions are approximate and floor plans are not to scale
- Through a Homewise Home For Life Plan people aged 60+ can secure this property for up to 59% less, by purchasing a Lifetime Lease.



23411473/20250529/JB2/JB2