



Price

£220,000

Leasehold

2x  1x  1x 

**The Dome, Dome Way,
Redhill, Surrey, RH1**

OVER 60?

Secure this property
for up to **59% less!**

cubitt&west
Helping you move forwards



Main features

- Rarely available apartment now on the market
- Generously sized bedrooms with ample built in storage
- Recently renovated bathroom featuring a stylish three-piece suite
- Contemporary kitchen with integrated appliances
- Secure, monitored parking system

Accommodation

THIRD FLOOR

Entrance Hall

Kitchen: 19'6 x 8'9 (5.95m x 2.67m)

Lounge: 15'6 x 10'4 (4.73m x 3.15m)

Bedroom 1: 15'7 x 8'9 (4.75m x 2.67m)

Bedroom 2: 15'9 x 8'9 (4.80m x 2.67m)

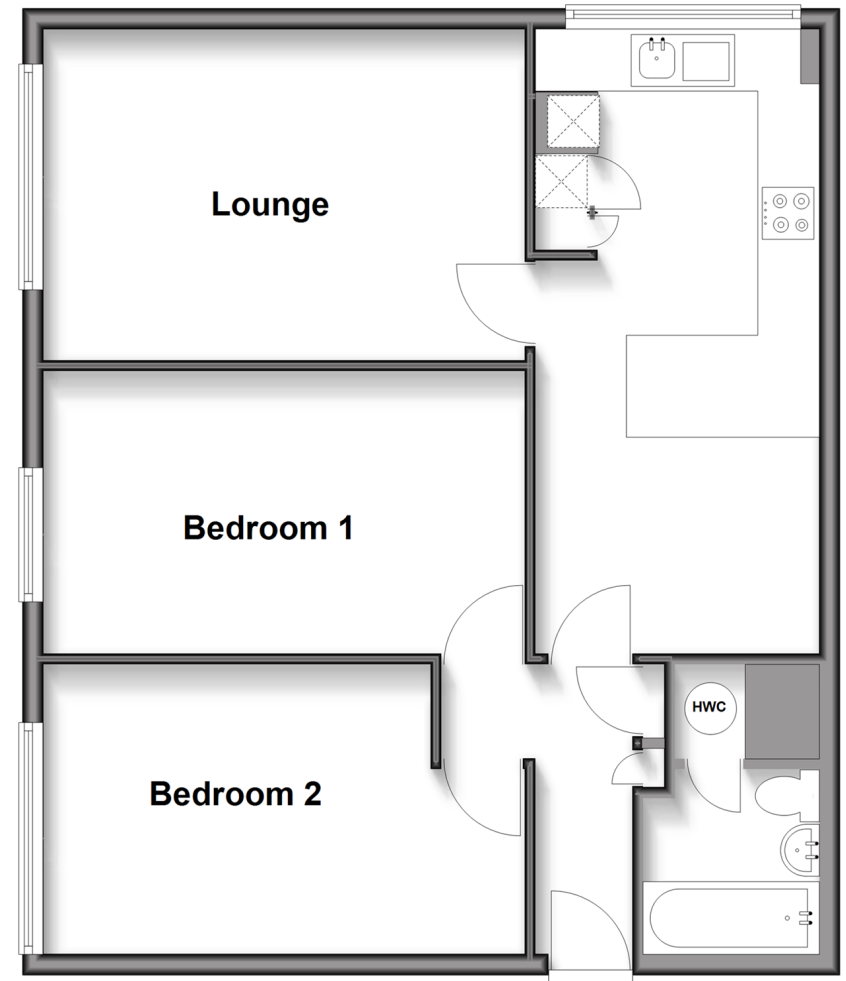
Bathroom

OUTSIDE

Off-Road Parking

Third Floor

Approx. 66.8 sq. metres (718.8 sq. feet)



Call Redhill - 01737 778866 ■ cubittandwest.co.uk

- Legal advice should be taken to verify fixtures/fittings, planning, alterations and/or lease details
- Appliances & services are untested, dimensions are approximate and floor plans are not to scale
- Through a Homewise Home For Life Plan people aged 60+ can secure this property for up to 59% less, by purchasing a Lifetime Lease.



23411470/20250619/JB2/JB2