



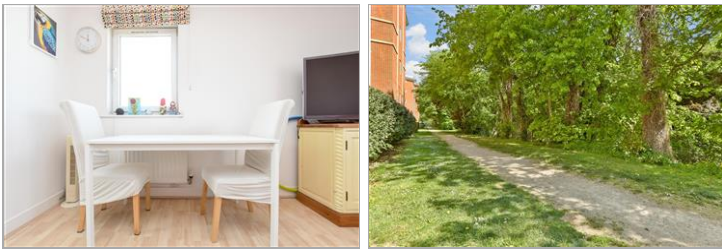
Price
£210,000

Leasehold

2x  2x  1x 

**Haven Court, Yoxall
Mews, Redhill, Surrey,
RH1**

cubitt&west
Helping you move forwards



Main features

- Beautiful top-floor apartment featuring spacious bedrooms
- Bright and airy triple-aspect lounge/diner
- Main bedroom with en-suite, and ample storage space
- Allocated resident parking, set within, mature communal grounds

Accommodation

FOURTH FLOOR

Entrance Hall

Kitchen/Dining Area: 21'7 x 11'2 (6.58m x 3.41m)

Bedroom 1 : 15'1 x 8'8 (4.60m x 2.64m)

En Suite Shower Room

Bedroom 2: 14'9 x 9'3 (4.50m x 2.82m)

Bathroom

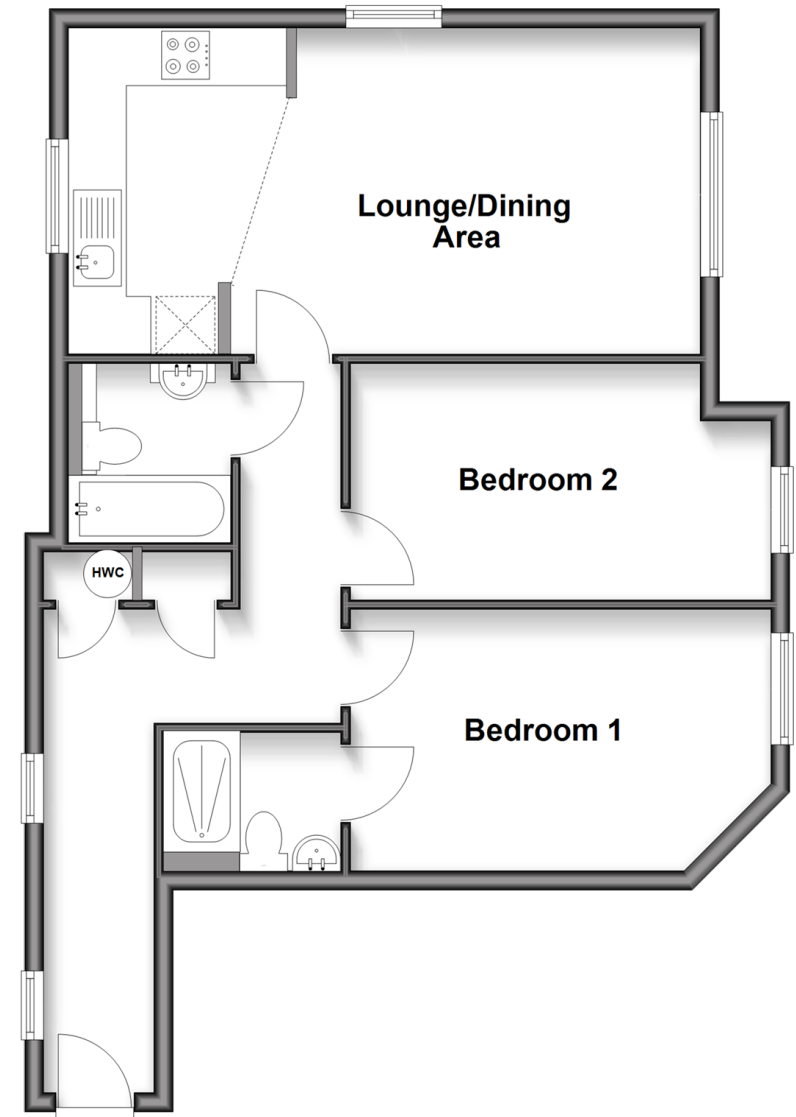
OUTSIDE

Allocated Parking

Communal Garden

Fourth Floor

Approx. 64.3 sq. metres (692.5 sq. feet)



Call Redhill - 01737 778866 ■ cubittandwest.co.uk

- Legal advice should be taken to verify fixtures/fittings, planning, alterations and/or lease details
- Appliances & services are untested, dimensions are approximate and floor plans are not to scale



23411458/20250613/SG/JB2