



**Price**

**£300,000**

**Leasehold**

2x  1x  1x 

**Nightingale House,  
Princes Road, Redhill,  
Surrey, RH1**

**cubitt&west**  
Helping you move forwards





## Main features

- First-floor converted apartment featuring two double bedrooms
- Spacious open plan kitchen/dining area
- Adaptable design allows for one of the double bedrooms to function as a living area
- Communal gardens, bike shed and parking to the rear of the building

## Accommodation

### FIRST FLOOR

Entrance Hall

Kitchen/Living/Dining Area: 14'6 x 12'1  
(4.42m x 3.69m)

Bedroom 1: 13'2 x 12'7 (4.02m x 3.84m)

Bedroom 2: 13'7 x 9'5 (4.14m x 2.87m)

Bathroom: 6'2 x 5'1 (1.88m x 1.55m)

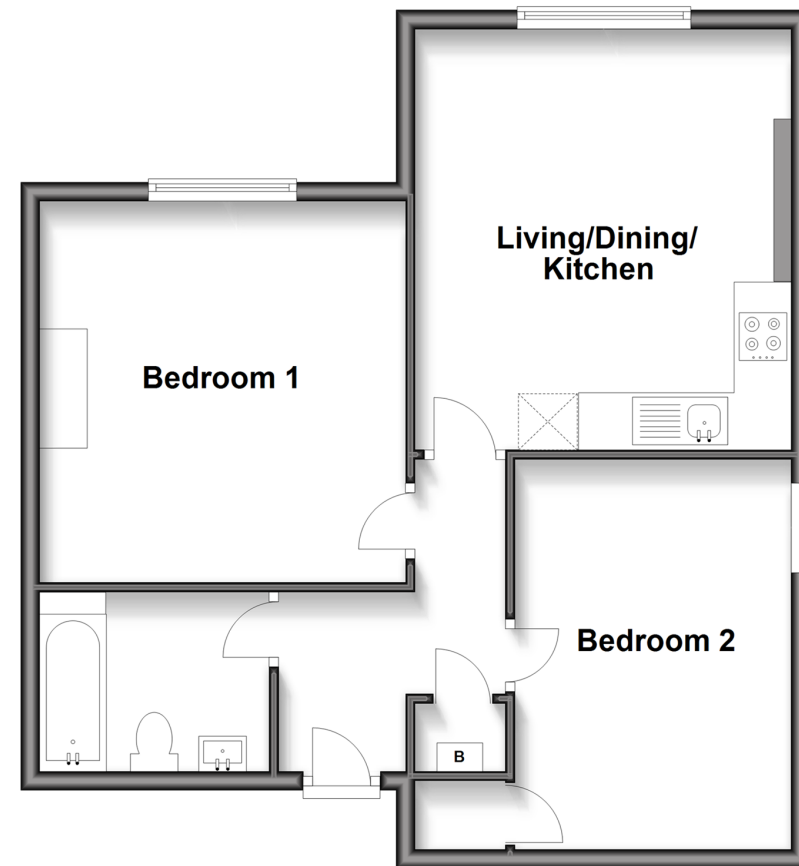
### OUTSIDE

Communal Gardens

Allocated Parking

## First Floor

Approx. 57.5 sq. metres (619.4 sq. feet)



**Call Redhill - 01737 778866 ■ [cubittandwest.co.uk](http://cubittandwest.co.uk)**

- Legal advice should be taken to verify fixtures/fittings, planning, alterations and/or lease details
- Appliances & services are untested, dimensions are approximate and floor plans are not to scale



23411439/20250428/AB/JB2