



Price
£600,000

Freehold

4x  2x  1x 

**Colesmead Road,
Redhill, Surrey, RH1**

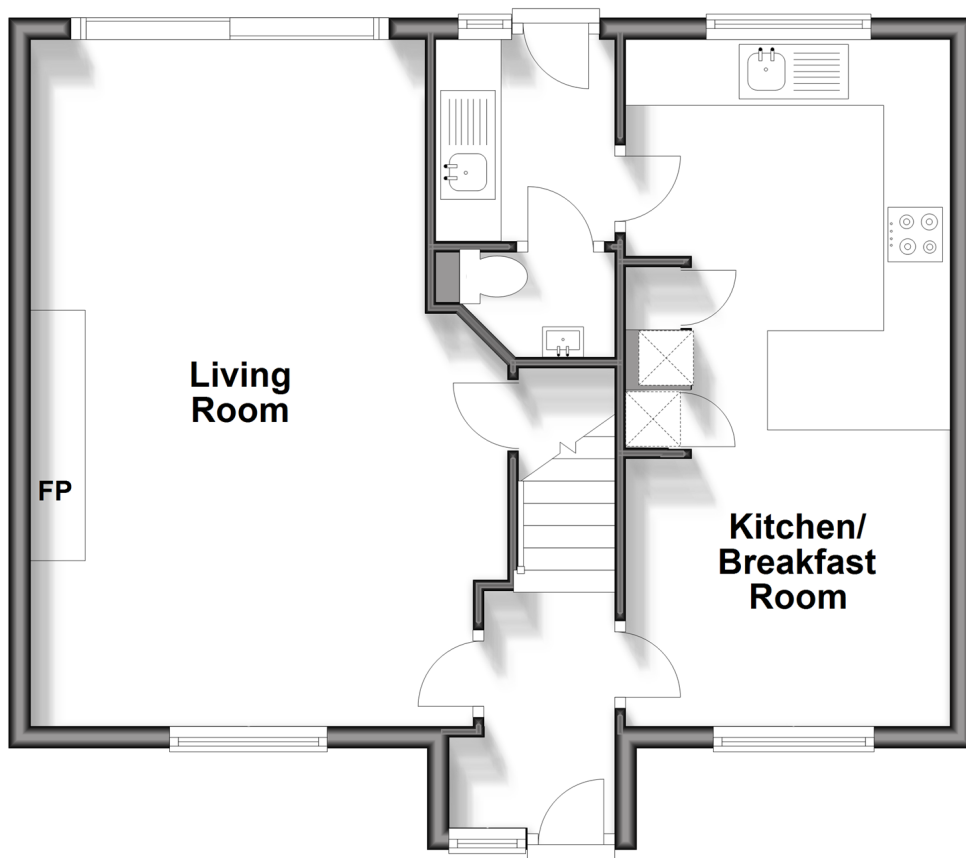
OVER 60?

Secure this property
for up to **59% less!**

cubitt&west
Helping you move forwards

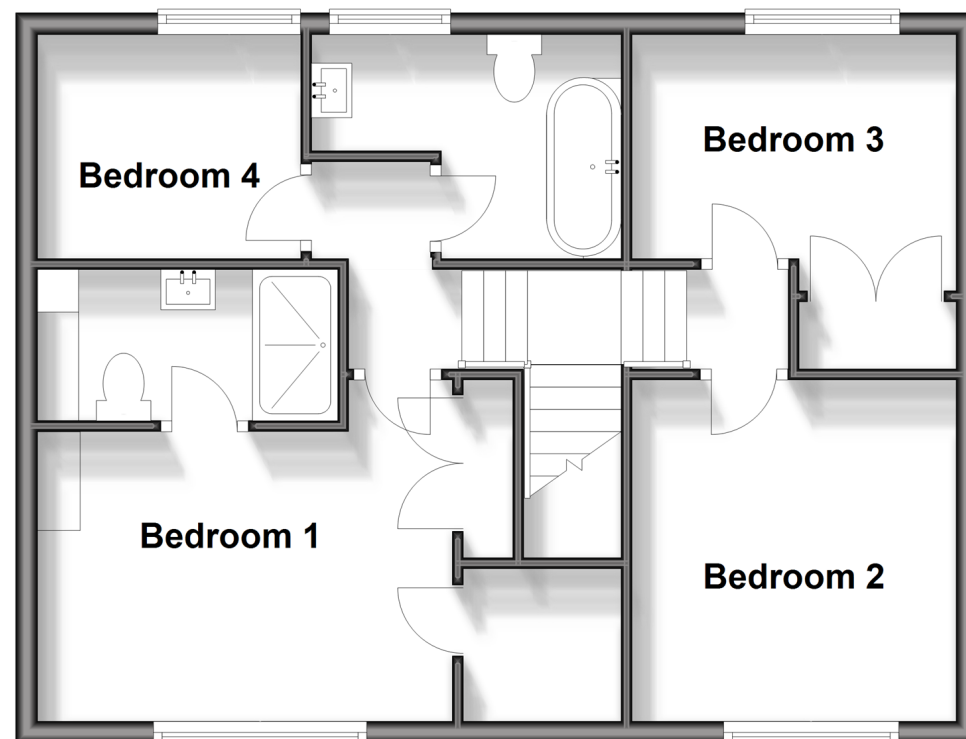
Ground Floor

Approx. 54.2 sq. metres (582.9 sq. feet)



First Floor

Approx. 53.0 sq. metres (570.8 sq. feet)



Accommodation

GROUND FLOOR

Entrance Hall

Living Room: 20'8 x 13'5 (6.30m x 4.09m)

Kitchen/Breakfast Room: 20'6 x 10'2 (6.25m x 3.10m)

Utility Room: 6'6 x 5'8 (1.98m x 1.73m)

Cloakroom

FIRST FLOOR

Landing

Bedroom 1: 12'4 x 8'7 (3.76m x 2.62m)

En-Suite Bathroom

Bedroom 2: 10'6 x 9'7 (3.20m x 2.92m)

Bedroom 3: 9'7 x 7'9 (2.92m x 2.36m)

Bedroom 4: 9'7 x 7'9 (2.92m x 2.36m)

Bathroom

OUTSIDE

Rear Garden

Driveway



Main features

- Newly renovated home with modern kitchen appliances
- Feature fireplace log burner and kitchen under floor heating
- Sliding doors to the rear garden
- Four good sized bedrooms with storage
- Landscaped rear garden with BBQ area
- Utility room and cloakroom
- Outside office



Nearest Schools

Primary Schools: St Matthew's CofE Primary 0.6 miles, Lime Tree Primary 0.8 miles, Merstham Primary 1.1 miles

Secondary Schools: St Bede's School 0.9 miles, The Warwick School 1.3 miles, Woodfield School 1.5 miles



Transport Information

Train Stations: Redhill 0.9 miles, Merstham 1.5 miles, Reigate 1.8 miles



Address

Colesmead Road, Redhill, Surrey, RH1



Directions

For directions to this property please contact us.



cubitt&west
Helping you move forwards

Call Redhill Branch 01737 778866 ■ cubittandwest.co.uk



- Legal advice should be taken to verify fixtures/fittings, planning, alterations and/or lease details
- Appliances & services are untested, dimensions are approximate and floor plans are not to scale
- Through a Homewise Home For Life Plan people aged 60+ can secure this property for up to 59% less, by purchasing a Lifetime Lease.



23408821/20250329/AB/JB2