



Price

£475,000

Freehold

3x  2x  3x 

**Westway Gardens,
Redhill, Surrey, RH1**

OVER 60?

Secure this property
for up to **59% less!**

cubitt&west
Helping you move forwards



Main features

- Situated in a sought-after location
- Desirable corner plot with potential to extend/personalise (subject to planning permission)
- Bright sitting room with views over a green rear garden
- Three generously sized bedrooms
- Large front, side, and rear garden areas

Accommodation

GROUND FLOOR

Entrance Hall

Study: 9'3 x 7'2 (2.82m x 2.19m)

Lounge/Diner: 16'9 x 10'4 (5.11m x 3.15m)

Kitchen: 13'5 x 10'7 (4.09m x 3.23m)

Sun Room: 10'7 x 10'6 (3.23m x 3.20m)

Shower Room

FIRST FLOOR

Landing

Bedroom 1: 12'1 x 9'9 (3.69m x 2.97m)

Bedroom 2: 11'4 x 9'6 (3.46m x 2.90m)

Bedroom 3: 8'5 x 7'9 (2.57m x 2.36m)

Bathroom

OUTSIDE

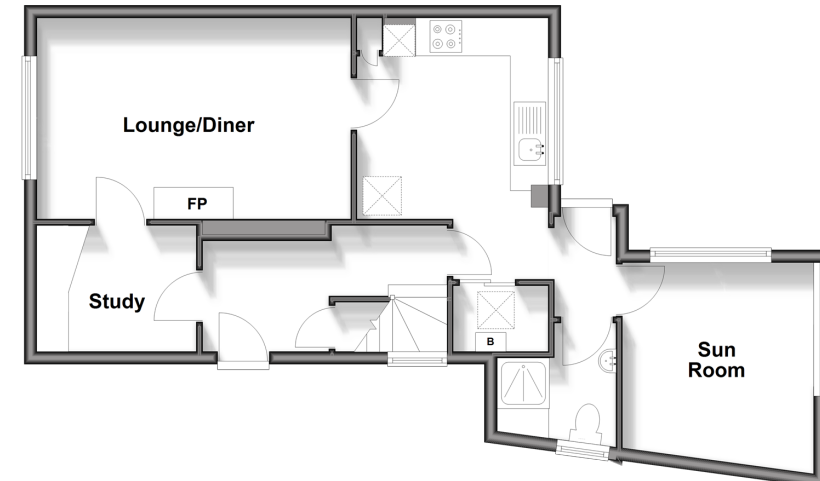
Driveway

Front Garden

Rear Garden

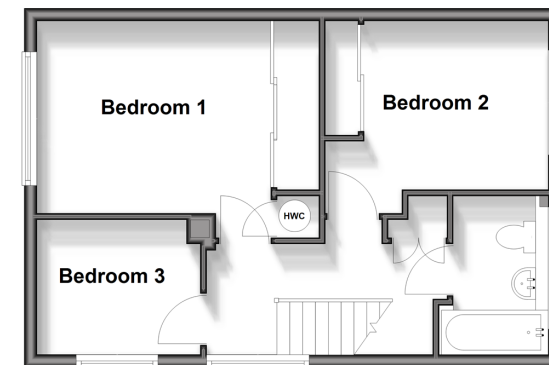
Ground Floor

Approx. 56.9 sq. metres (612.0 sq. feet)



First Floor

Approx. 42.3 sq. metres (455.4 sq. feet)



Call Redhill - 01737 778866 ■ cubittandwest.co.uk

- Legal advice should be taken to verify fixtures/fittings, planning, alterations and/or lease details
- Appliances & services are untested, dimensions are approximate and floor plans are not to scale
- Through a Homewise Home For Life Plan people aged 60+ can secure this property for up to 59% less, by purchasing a Lifetime Lease.



23411426/20250322/AB/JB2