



Price
£240,000

Leasehold

1x  1x  1x 

**Nightingale Court, St.
Anne's Mount, Redhill,
Surrey, RH1**

OVER 60?

Secure this property
for up to **59% less!**

cubitt & west
Helping you move forwards



Main features

- **Fantastic location within easy walking distance to station**
- **Benefits from a new kitchen and bathroom**
- **Convenience of an allocated parking space**
- **Close to shops and amenities**
- **No onward chain**

Accommodation

THIRD/TOP FLOOR

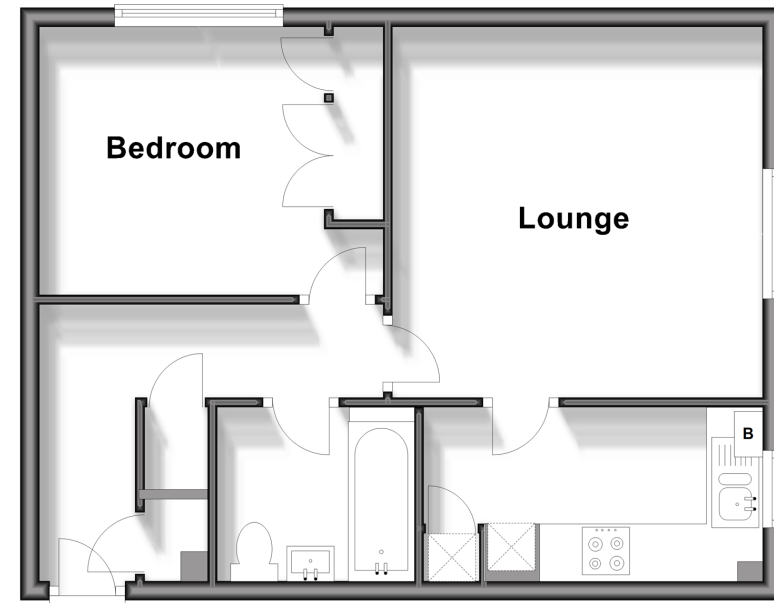
Entrance Hall
 Lounge: 13'6 x 12'8 (4.12m x 3.86m)
 Kitchen: 12'5 x 6'0 (3.79m x 1.83m)
 Bedroom 1: 12'0 x 9'9 (3.66m x 2.97m)
 Bathroom 2

OUTSIDE

Communal Gardens
 Allocated Parking
 Visitor Parking

Third Floor

Approx. 44.7 sq. metres (481.2 sq. feet)



Call Redhill - 01737 778866 ■ cubittandwest.co.uk

■ Legal advice should be taken to verify fixtures/fittings, planning, alterations and/or lease details
 ■ Through a Homewise Home For Life Plan people aged 60+ can secure this property for up to 59% less, by purchasing a Lifetime Lease.

■ Appliances & services are untested, dimensions are approximate and floor plans are not to scale



23411333/20241007/JU/JB2