



Price

£270,000

Leasehold

1x  1x  1x 

**Picture House,
Marketfield Way,
Redhill, Surrey, RH1**

cubitt & west
Helping you move forwards



Main features

- No onward chain
- Unique apartment with spacious lounge/diner area
- Modern fitted kitchen with integrated appliances
- Double bedroom with fitted wardrobes
- Views overlooking Redhill
- Convenient location to Redhill Town Centre and Train Station
- Perfect for Commuters, First Time Buyers and Investors

Accommodation

EIGHTH FLOOR

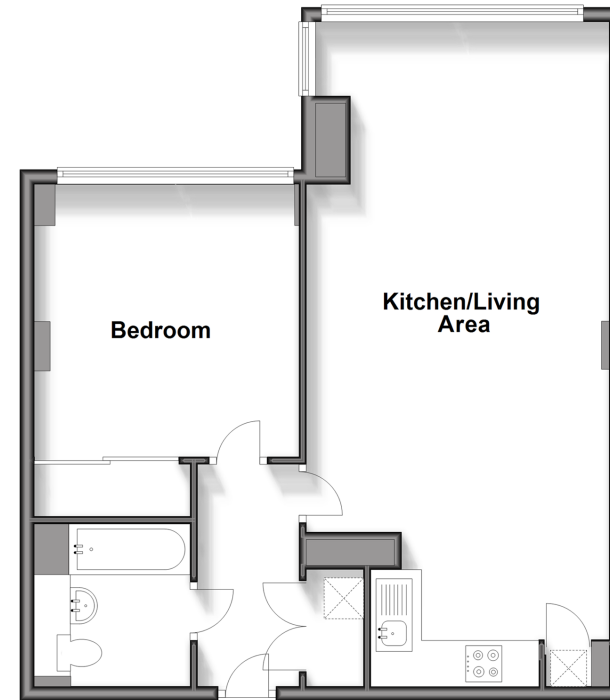
Hallway: 10'0 x 4'6 (3.05m x 1.37m)
 Kitchen/Living area: 30'9 x 13'8 (9.38m x 4.17m)
 Bedroom: 12'5 x 12'0 (3.79m x 3.66m)
 Bathroom: 7'6 x 7'3 (2.29m x 2.21m)

OUTSIDE

Communal grounds

Eighth Floor

Approx. 65.4 sq. metres (704.4 sq. feet)



Call Redhill - 01737 778866 ■ cubittandwest.co.uk

■ Legal advice should be taken to verify fixtures/fittings, planning, alterations and/or lease details

■ Appliances & services are untested, dimensions are approximate and floor plans are not to scale



23411173/20240919/JU/JB2