



Price

£260,000

Leasehold

2x  1x  1x 

Harvey Court, Oxford  
Road, Redhill, Surrey,  
RH1

**OVER 60?**

Secure this property  
for up to **59% less!**

**cubitt & west**  
Helping you move forwards



## Main features

- **Allocated garage parking**
- **5-minute walk from Redhill town centre**
- **Quiet location**
- **Large communal garden area**
- **Power shower**
- **Lease in process of being renewed**

## Accommodation

### FIRST FLOOR

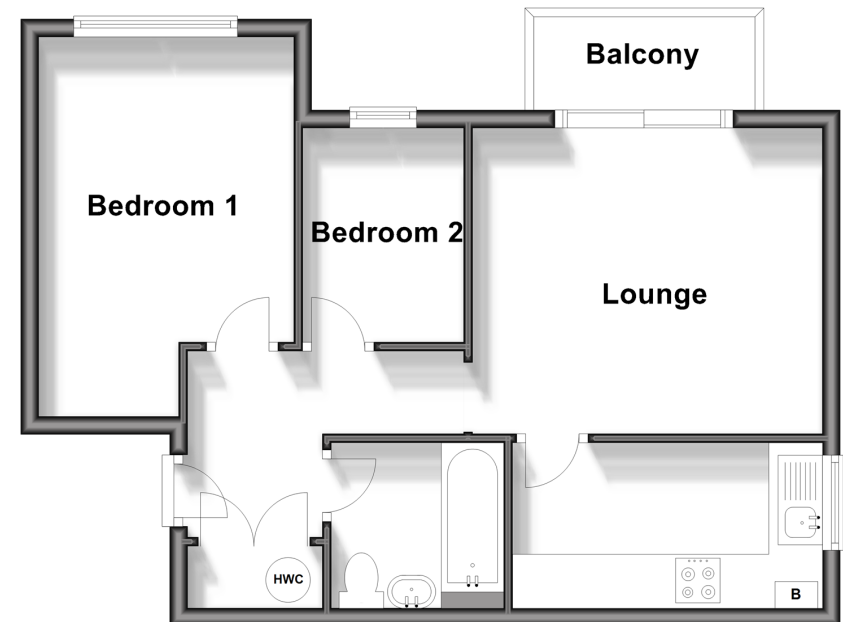
- Entrance Hall: 6'7 x 4'4 (2.01m x 1.32m)
- Lounge : 12'8 x 11'1 (3.86m x 3.38m)
- Balcony
- Kitchen: 11'4 x 6'0 (3.46m x 1.83m)
- Bedroom 1: 13'8 x 9'3 (4.17m x 2.82m)
- Bedroom 2: 7'9 x 5'9 (2.36m x 1.75m)
- Bathroom: 6'6 x 6'1 (1.98m x 1.86m)

### OUTSIDE

- Allocated parking
- Communal Gardens

### First Floor

Approx. 46.5 sq. metres (500.6 sq. feet)



**Call Redhill - 01737 778866 ■ cubittandwest.co.uk**

■ Legal advice should be taken to verify fixtures/fittings, planning, alterations and/or lease details  
 ■ Through a Homewise Home For Life Plan people aged 60+ can secure this property for up to 59% less, by purchasing a Lifetime Lease.

■ Appliances & services are untested, dimensions are approximate and floor plans are not to scale



23411303/20240802/SG/OP