

OVER 60?

Secure this property
for up to **59% less!**



Price

£650,000

Freehold

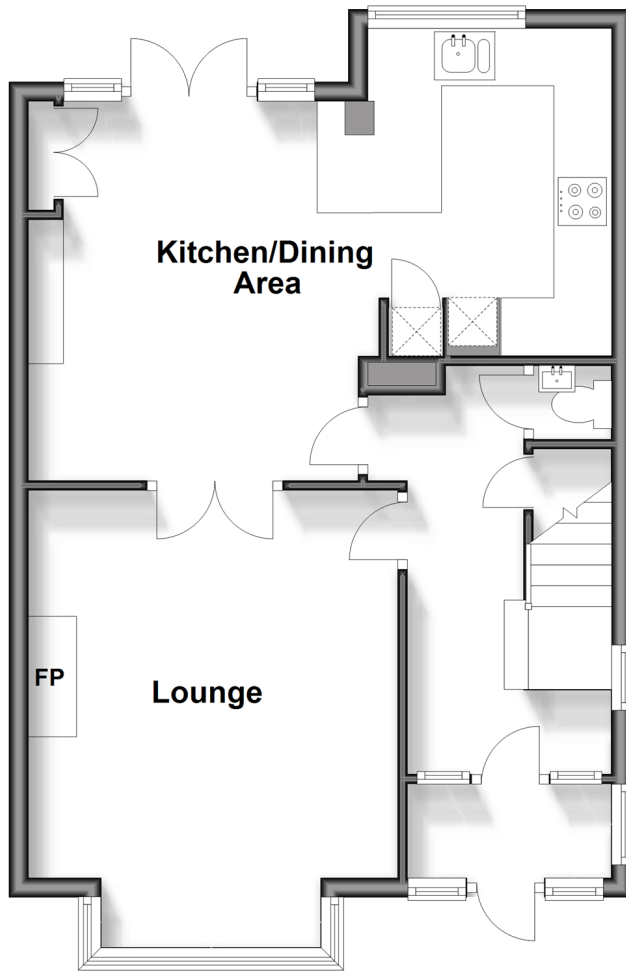
4x  2x  2x 

Redstone Park, Redhill, Surrey, RH1

cubitt & west
Helping you move forwards

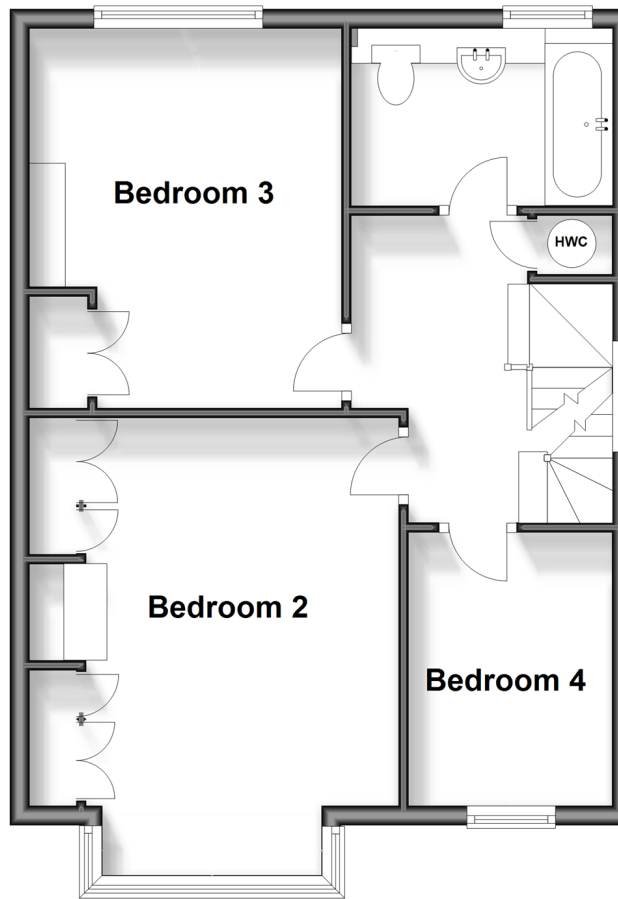
Ground Floor

Approx. 52.1 sq. metres (561.2 sq. feet)



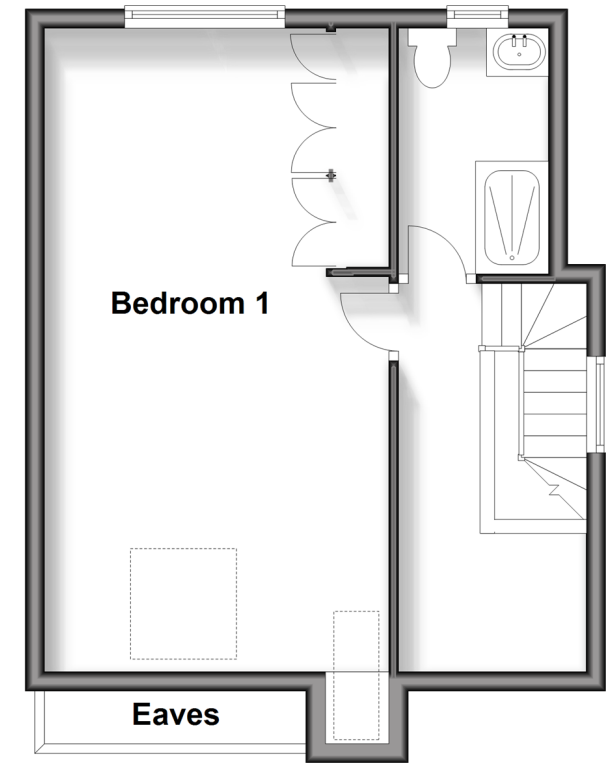
First Floor

Approx. 50.2 sq. metres (540.8 sq. feet)



Second Floor

Approx. 36.9 sq. metres (397.5 sq. feet)



Accommodation

GROUND FLOOR

Hallway
Living Room: 16'2 x 12'7 (4.93m x 3.84m)
Dining Room: 12'9 x 11'1 (3.89m x 3.38m)
Kitchen: 12'6 x 8'2 (3.81m x 2.49m)

FIRST FLOOR

Bedroom 2: 16'2 x 11'4 (4.93m x 3.46m)
Bedroom 3: 13'0 x 10'8 (3.97m x 3.25m)
Bedroom 4: 9'0 x 8'2 (2.75m x 2.49m)
Family Bathroom

SECOND FLOOR

Bedroom 1: 21'4 x 11'8 (6.51m x 3.56m)
En Suite

OUTSIDE

Driveway
Rear Garden



Main features

- Impressive 1930's Semi-Detached Home in Redhill
- Fitted Kitchen with Integrated Appliances
- Situated on a Sought After Road
- Westerly Rear Garden with Covered Decking Area
- Second Floor Bedroom with En-suite
- Great Catchment to Local Schools, Transport Links and High Street



Nearest Schools

Primary Schools: Brambletye Junior School 0.5 miles, St Matthew's CofE Primary 0.6 miles, St Joseph's Catholic Primary, Redhill 0.7 miles

Secondary Schools: The Warwick School 0.3 miles, St



Transport Information

Train Stations: Redhill 0.5 miles, Earlswood 1.1 miles, Merstham 1.9 miles



Address

Redstone Park, Redhill, Surrey, RH1



Directions

For directions to this property please contact us.



cubitt&west
Helping you move forwards

Call Redhill Branch 01737 778866 ■ cubittandwest.co.uk



- The seller is a person connected with Cubitt & West as defined in the Estate Agents Act 1979
- Appliances & services are untested, dimensions are approximate and floor plans are not to scale

- Legal advice should be taken to verify fixtures/fittings, planning, alterations and/or lease details
- Through a Homewise Home For Life Plan people aged 60+ can secure this property for up to 59% less, by purchasing a Lifetime Lease.



23411287/20240629/JB2/JB2