



**Price**  
**£280,000**

**Leasehold**

2x  2x  1x 

**Tylehurst Drive, Redhill,  
Surrey, RH1**

**OVER 60?**

Secure this property  
for up to **59% less!**

**cubitt & west**  
Helping you move forwards



## Main features

- 2 bed ground floor apartment
- Communal garden
- Fitted kitchen
- Allocated Parking Space
- Spacious Bedrooms and En-suite bathroom
- Private Road with communal gardens including a childrens park

## Accommodation

### GROUND FLOOR

Entrance Hall

Kitchen/Lounge/Diner: 24'1 x 11'10  
(7.35m x 3.61m)

Bedroom 1: 12'0 x 10'4 (3.66m x 3.15m)

En-suite Shower Room

Bedroom 2: 12'4 x 10'4 (3.76m x 3.15m)

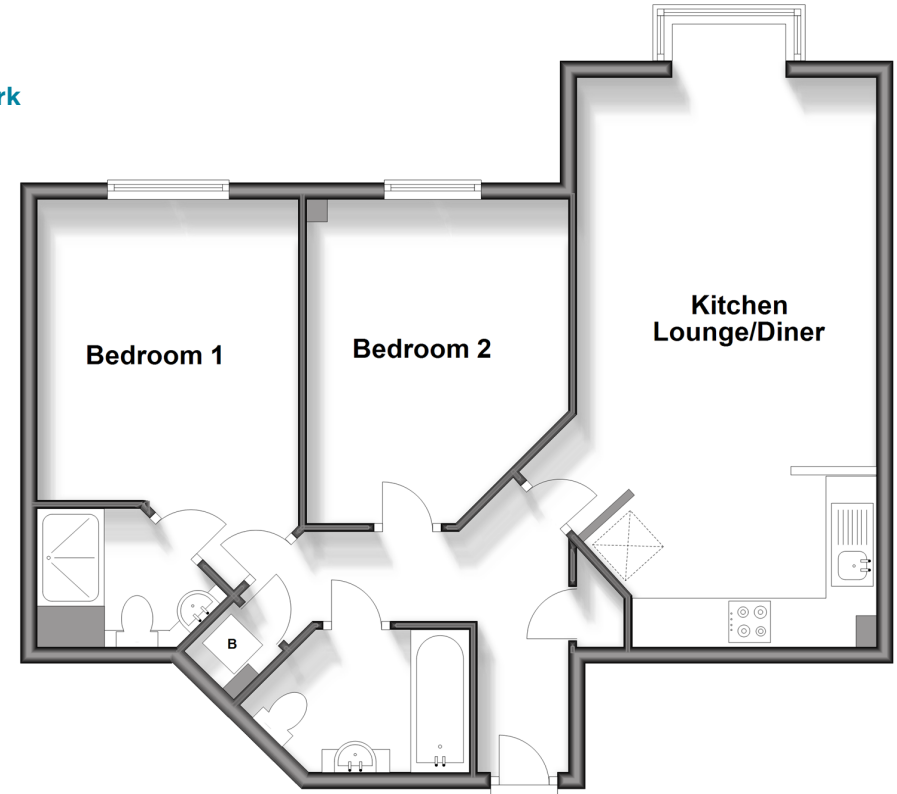
Bathroom

### OUTSIDE

Communal Garden

Allocated Parking Space

**Ground Floor**  
Approx. 65.8 sq. metres (708.4 sq. feet)



**Call Redhill - 01737 778866 ■ [cubittandwest.co.uk](http://cubittandwest.co.uk)**

- Legal advice should be taken to verify fixtures/fittings, planning, alterations and/or lease details
- Appliances & services are untested, dimensions are approximate and floor plans are not to scale
- Through a Homewise Home For Life Plan people aged 60+ can secure this property for up to 59% less, by purchasing a Lifetime Lease.



23411286/20240625/CFE/JB2