



**Price**  
**£290,000**

**Leasehold**

2x  1x  1x 

**Woodlands Road,  
Redhill, Surrey, RH1**

**cubitt & west**  
Helping you move forwards





## Main features

- 2 bed ground floor apartment
- Garage
- Ample Storage
- Residents Parking
- Spacious Rooms
- Recently Refurbished Kitchen
- Close to Local Amenities and Transport Links

## Accommodation

### GROUND FLOOR

#### Hallway

Lounge: 13'2 x 11'5 (4.02m x 3.48m)

Kitchen: 11'5 x 6'8 (3.48m x 2.03m)

Main Bedroom : 11'8 x 11'6 (3.56m x 3.51m)

Bedroom : 11'5 x 6'5 (3.48m x 1.96m)

Bathroom: 6'5 x 6'3 (1.96m x 1.91m)

### OUTSIDE

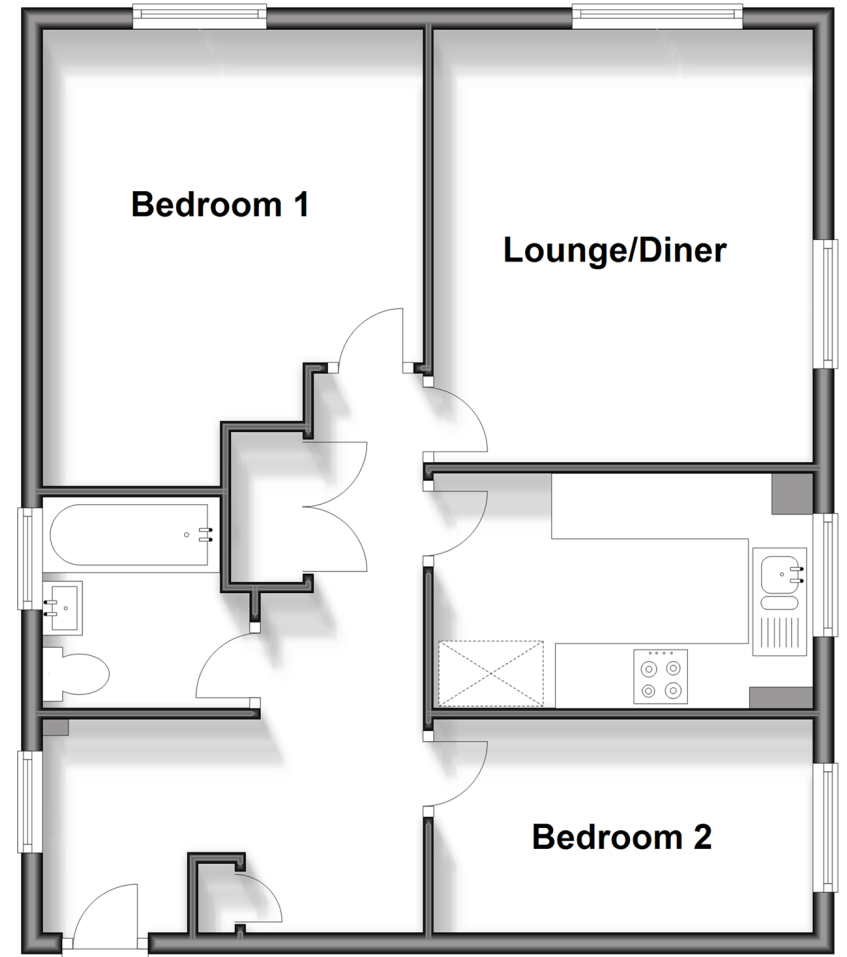
#### Garage

Two Parking Spaces

Communal Grounds

## Ground Floor

Approx. 59.8 sq. metres (643.2 sq. feet)



**Call Redhill - 01737 778866 ■ [cubittandwest.co.uk](http://cubittandwest.co.uk)**

- Legal advice should be taken to verify fixtures/fitings, planning, alterations and/or lease details
- Appliances & services are untested, dimensions are approximate and floor plans are not to scale



23411174/20240625/CFE/JB2