



**Price**  
**£260,000**

**Leasehold**

1x  1x  1x 

**Parkside Court, Gatton**  
**Park Road, Redhill,**  
**Surrey, RH1**

**OVER 60?**

Secure this property  
for up to **59% less!**

**cubitt&west**  
Helping you move forwards





## Main features

- Ground Floor Apartment
- Direct Access to a Private Patio from Lounge/Dining Area
- Fitted Waterproof TV in Bathroom
- Close to Local Amenties and Transport Links
- Peaceful Environment
- Offered Chain Free

## Accommodation

### GROUND FLOOR

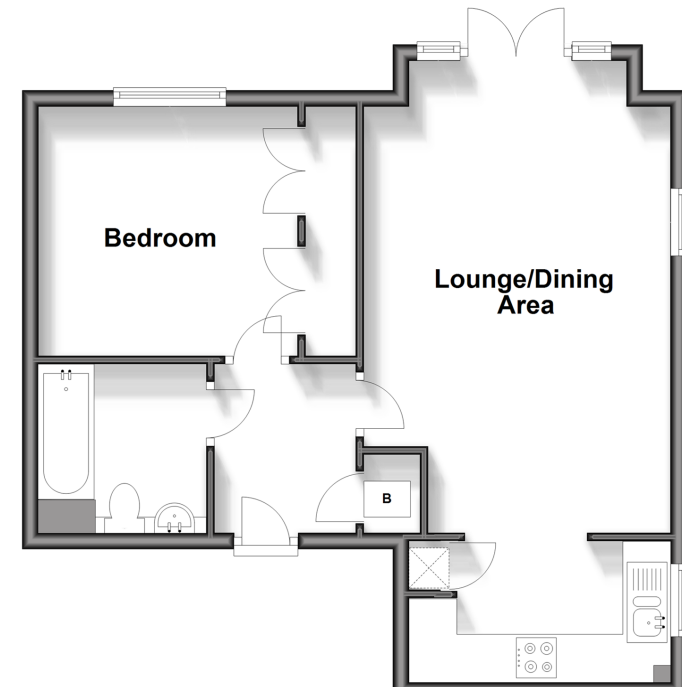
Entrance Hall  
 Lounge/Dining Area : 20'2 x 12'5 (6.15m x 3.79m)  
 Kitchen: 11'3 x 4'7 (3.43m x 1.40m)  
 Bedroom: 10'6 x 10'1 (3.20m x 3.08m)  
 Bathroom

### OUTSIDE

Patio Area  
 Garden  
 Allocated Parking

### Ground Floor

Approx. 49.9 sq. metres (536.8 sq. feet)



**Call Redhill - 01737 778866 ■ [cubittandwest.co.uk](http://cubittandwest.co.uk)**

■ Legal advice should be taken to verify fixtures/fittings, planning, alterations and/or lease details  
 ■ Through a Homewise Home For Life Plan people aged 60+ can secure this property for up to 59% less, by purchasing a Lifetime Lease.

■ Appliances & services are untested, dimensions are approximate and floor plans are not to scale