



Price
£750,000

Freehold

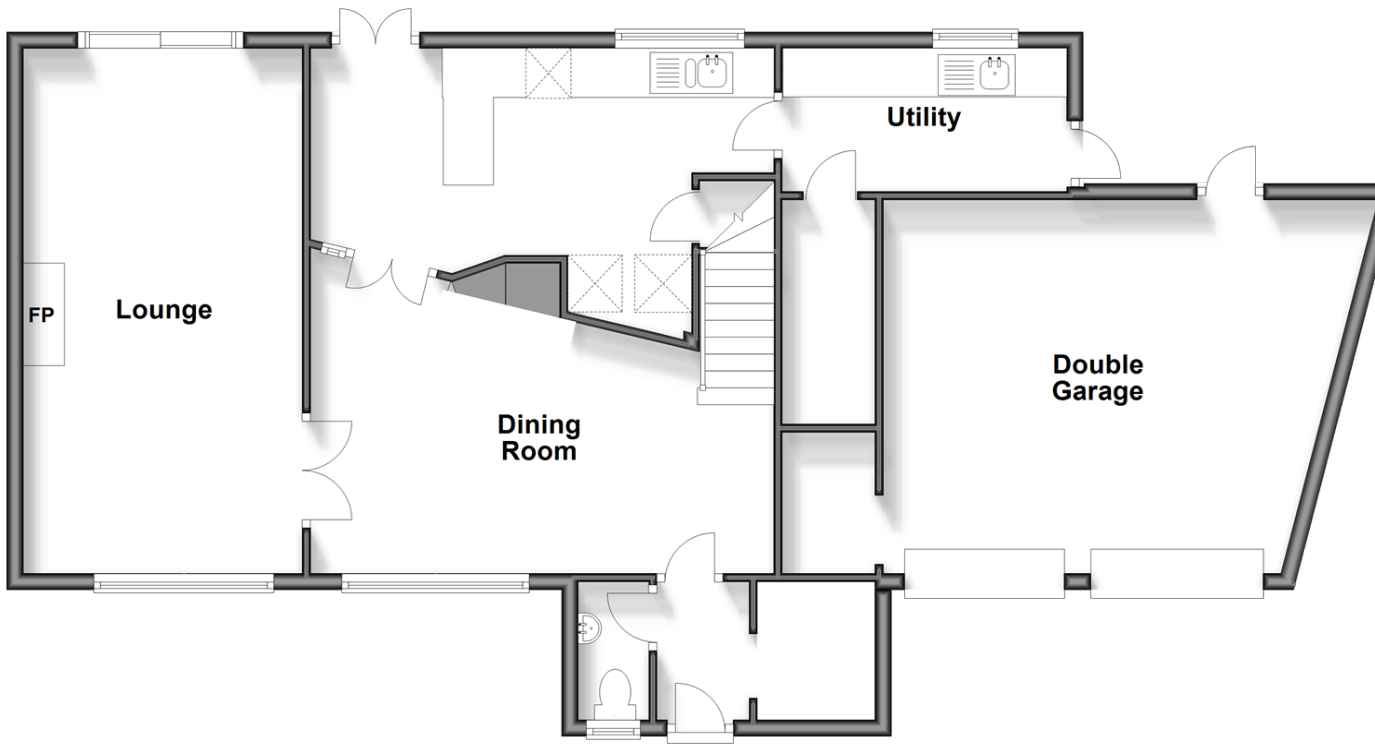
4x  2x  2x 

**Woodfield Close,
Redhill, Surrey, RH1**

cubitt&west
Helping you move forwards

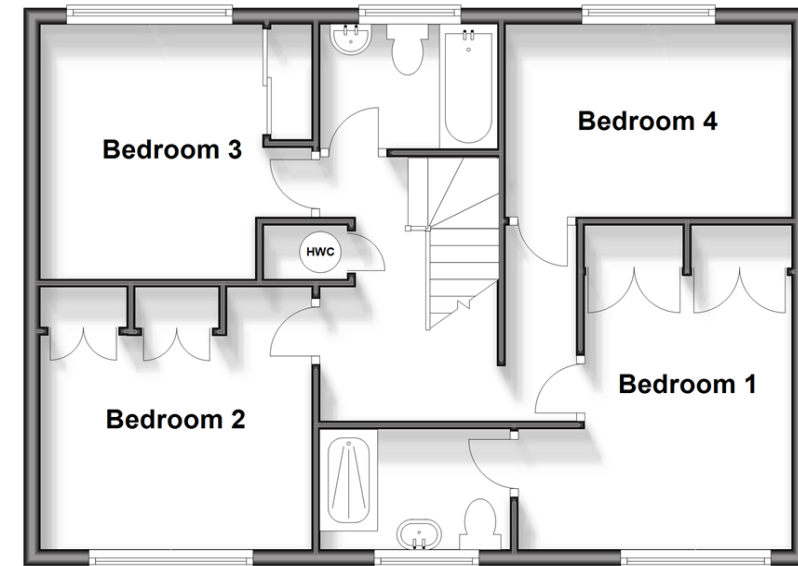
Ground Floor

Approx. 101.8 sq. metres (1096.1 sq. feet)



First Floor

Approx. 58.3 sq. metres (627.2 sq. feet)



Accommodation

GROUND FLOOR

Hallway
Cloakroom
Dining Room: 18'6 x 11'9 (5.64m x 3.58m)
Lounge: 21'8 x 11'1 (6.61m x 3.38m)
Kitchen/Breakfast Room: 18'5 x 8'5 (5.62m x 2.57m)
Utility: 12'7 x 6'5 (3.84m x 1.96m)

FIRST FLOOR

Bedroom 1: 12'5 x 11'8 (3.79m x 3.56m)
En suite
Bedroom 2: 10'4 x 10'2 (3.15m x 3.10m)
Bedroom 3: 10'4 x 10'0 (3.15m x 3.05m)
Bedroom 4: 11'0 x 8'2 (3.36m x 2.49m)

OUTSIDE

Front Garden
Double Garage
Covered Terrace
Back Garden
Swimming Pool



Main features

- Driveway
- Double Garage
- EVE Charging Point
- Front & Rear Gardens
- Cul-de-sac Location
- Close to Local Amenities and Town Centre



Nearest Schools

Primary Schools: St Joseph's Catholic Primary, Redhill 0.2 miles, Wray Common Primary 0.2 miles, St Matthew's CofE Primary 0.3 miles

Secondary Schools: St Bede's School 0.4 miles, The



Transport Information

Train Stations: Redhill 0.5 miles, Earlswood 1.1 miles, Reigate 1.1 miles



Address

Woodfield Close, Redhill, Surrey, RH1



Directions

For directions to this property please contact us.





cubitt&west
Helping you move forwards

Call Redhill Branch 01737 778866 ■ cubittandwest.co.uk



■ Legal advice should be taken to verify fixtures/fittings, planning, alterations and/or lease details ■ Appliances & services are untested, dimensions are approximate and floor plans are not to scale



23411248/20250111/NF1/JB2