



Price

£500,000

Freehold

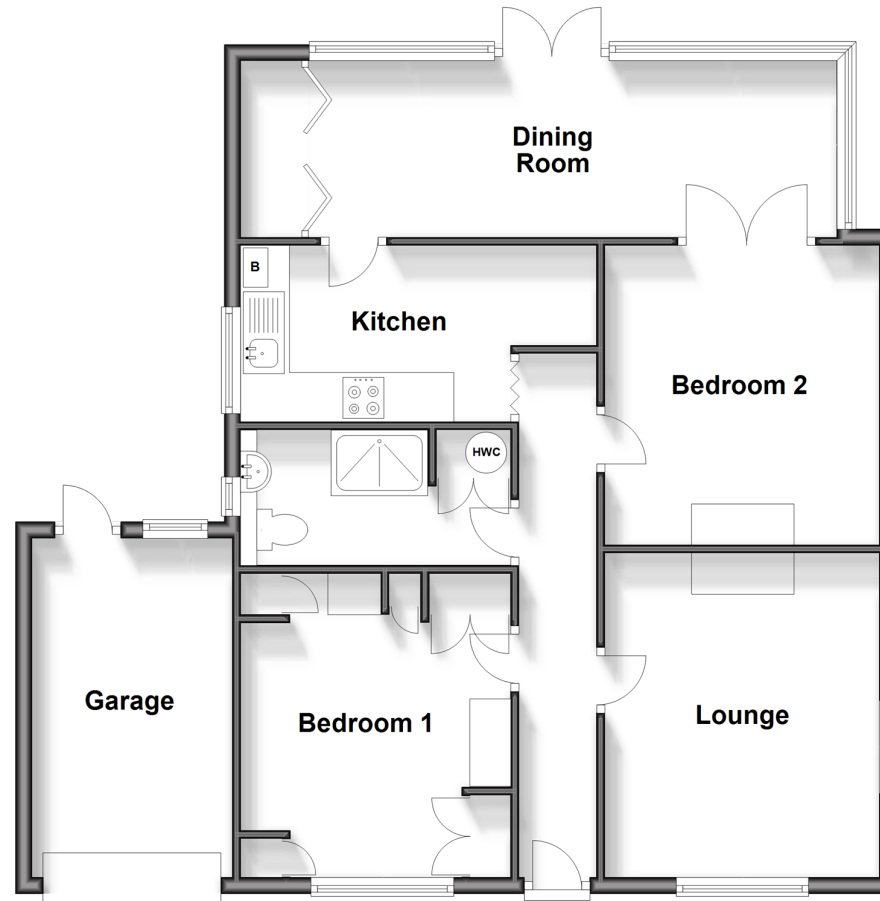
2x  1x  2x 

**"Shamrock", Melton
Road, Merstham,
Redhill, Surrey, RH1**

cubitt & west
Helping you move forwards

Ground Floor

Approx. 87.0 sq. metres (936.3 sq. feet)



Accommodation

GROUND FLOOR

Entrance Hall

Lounge: 12'6 x 10'9 (3.81m x 3.28m)

Bedroom 2: 11'9 x 10'9 (3.58m x 3.28m)

Dining Room: 21'1 x 7'0 (6.43m x 2.14m)

Kitchen: 14'1 x 6'9 (4.30m x 2.06m)

Shower Room

Bedroom 1: 11'9 x 10'9 (3.58m x 3.28m)

OUTSIDE

Front Garden

Driveway

Garage

Rear Garden



Main features

- Charming and spacious detached bungalow
- Offered in good condition throughout
- Peacefully located on a quiet no through road
- Large and beautifully maintained rear garden
- Just a short walk to Merstham train station and local amenities of the village high street



Nearest Schools

Primary Schools: Lime Tree Primary 0.1 miles, Merstham Primary 0.5 miles, Furzefield Primary 0.7 miles

Secondary Schools: St Nicholas School 0.3 miles, Woodfield School 0.5 miles, The Warwick School 0.9 miles



Transport Information

Train Stations: Merstham 0.6 miles, Redhill 1.2 miles, Earlswood 2.0 miles



Address

"Shamrock", Melton Road, Merstham, Redhill, Surrey, RH1



Directions

For directions to this property please contact us.



cubitt&west
Helping you move forwards

Call Redhill Branch 01737 778866 ■ [cubittandwest.co.uk](https://www.cubittandwest.co.uk)



■ Legal advice should be taken to verify fixtures/fittings, planning, alterations and/or lease details ■ Appliances & services are untested, dimensions are approximate and floor plans are not to scale



23411253/20241106/JB2/JB2