



Price
£375,000

Leasehold

3x  2x  1x 

**Eton House, Old School
Close, Redhill, Surrey,
RH1**

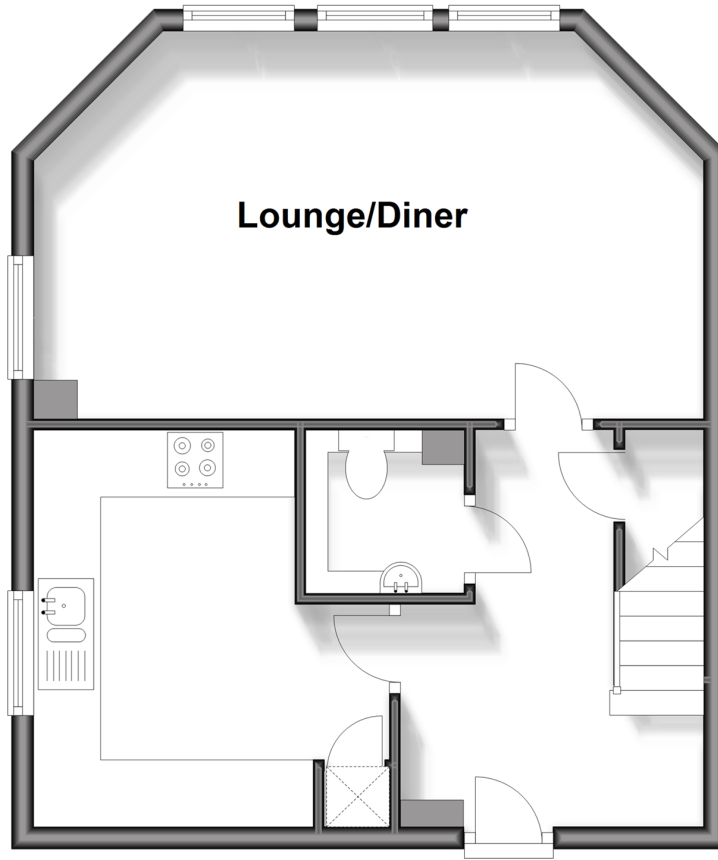
OVER 60?

Secure this property
for up to **59% less!**

cubitt & west
Helping you move forwards

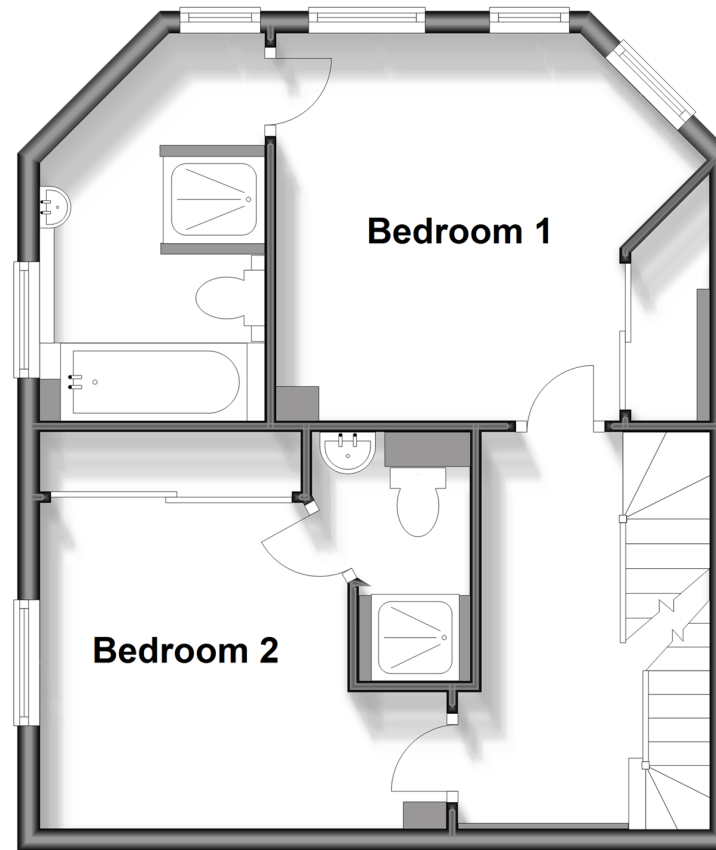
First Floor

Approx. 41.7 sq. metres (449.3 sq. feet)



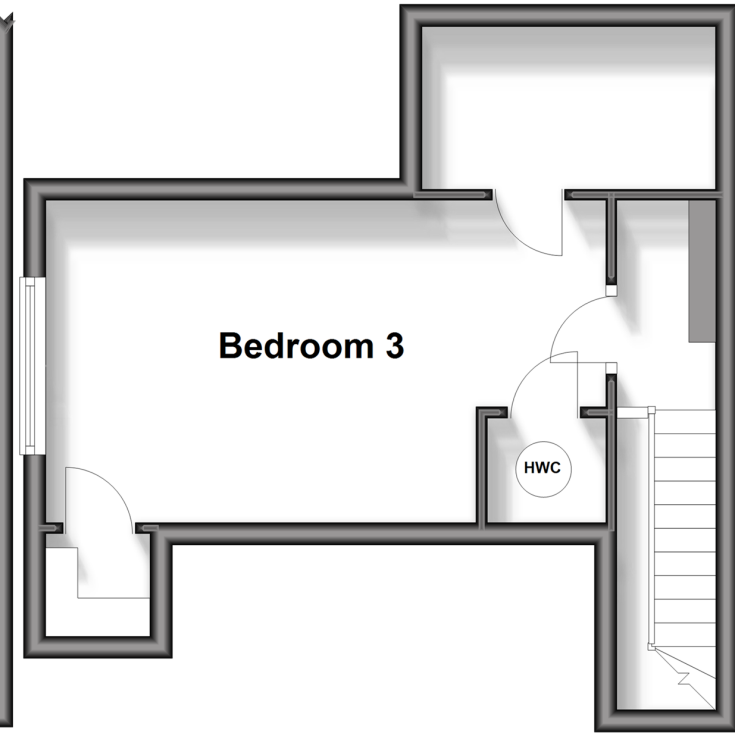
Second Floor

Approx. 41.8 sq. metres (450.3 sq. feet)



Third Floor

Approx. 24.1 sq. metres (259.6 sq. feet)



Accommodation

GROUND FLOOR

Hallway

Lounge/Dining Room : 19'8 x 11'6 (6.00m x 3.51m)

Kitchen: 11'7 x 11'7 (3.53m x 3.53m)

Cloakroom

En suite 1

Bedroom 2: 11'8 x 9'2 (3.56m x 2.80m)

En suite 2

SECOND FLOOR

Bedroom 3: 16'3 x 9'6 (4.96m x 2.90m)

FIRST FLOOR

Bedroom 1: 11'8 x 9'2 (3.56m x 2.80m)

OUTSIDE

Allocated Parking

Communal Gardens



Main features

- 3 bed top floor flat
- En-suite bathroom
- Dual aspect lounge/diner
- Separate kitchen
- Split over three floors
- Three double bedrooms



Nearest Schools

Primary Schools: Lime Tree Primary 0.7 miles, Furzefield Primary 1.4 miles, Holmesdale Community Infant School 1.7 miles

Secondary Schools: St Nicholas School 0.0 miles, Reigate



Transport Information

Train Stations: Redhill 0.6 miles, Earlswood 1.6 miles, Merstham 1.8 miles



Address

Eton House, Old School Close, Redhill, Surrey, RH1



Directions

For directions to this property please contact us.



cubitt&west
Helping you move forwards

Call Redhill Branch 01737 778866 ■ cubittandwest.co.uk



- Legal advice should be taken to verify fixtures/fittings, planning, alterations and/or lease details
- Appliances & services are untested, dimensions are approximate and floor plans are not to scale
- Through a Homewise Home For Life Plan people aged 60+ can secure this property for up to 59% less, by purchasing a Lifetime Lease.

EPC RATING

CURRENT: C(79) POTENTIAL: C(79)

23411257/20240601/TF/JB2