



**Guide Price**  
**£400,000**

**Freehold**

2x  1x  1x 

**Petridge Road, Redhill,  
Surrey, RH1**

**OVER 60?**

Secure this property  
for up to **59% less!**

**cubitt&west**  
Helping you move forwards



## Main features

- End of terrace house located in a peaceful cul-de-sac
- Close proximity to amenities and transport links
- Garage en bloc and a brick-built outbuilding for ample storage
- Spacious living area and a well-appointed kitchen
- New boiler and a new roof

## Accommodation

### GROUND FLOOR

Entrance Hall

Cloakroom

Lounge/Diner: 20'6 x 12'7 (6.25m x 3.84m)

Kitchen: 8'6 x 8'3 (2.59m x 2.52m)

### FIRST FLOOR

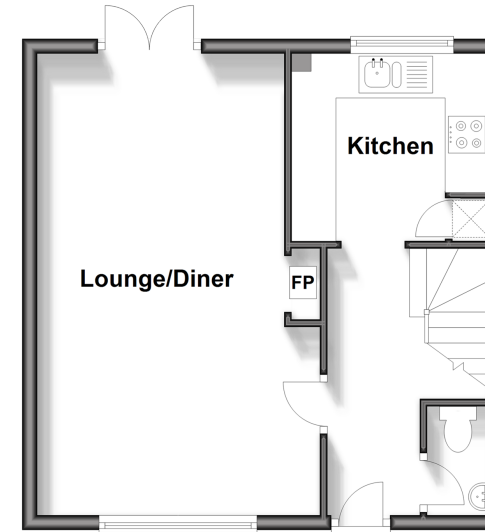
Bedroom 1: 12'7 x 10'9 (3.84m x 3.28m)

Bedroom 2: 12'6 x 9'4 (3.81m x 2.85m)

Bathroom

### Ground Floor

Approx. 38.4 sq. metres (413.1 sq. feet)



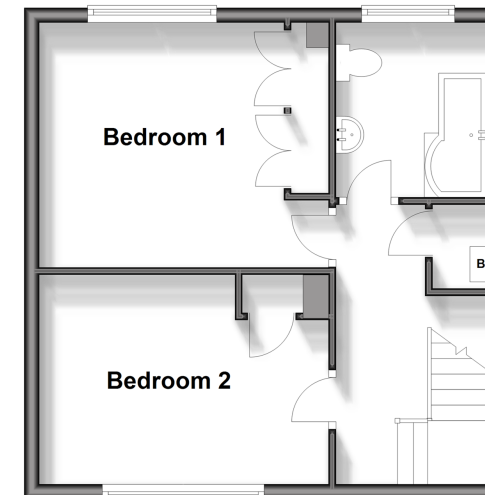
### Outbuilding

Approx. 16.8 sq. metres (180.8 sq. feet)



### First Floor

Approx. 38.4 sq. metres (413.1 sq. feet)



### Outbuilding

Approx. 4.8 sq. metres (52.1 sq. feet)



**Call Redhill - 01737 778866 ■ [cubittandwest.co.uk](http://cubittandwest.co.uk)**

- Legal advice should be taken to verify fixtures/fittings, planning, alterations and/or lease details
- Appliances & services are untested, dimensions are approximate and floor plans are not to scale
- Through a Homewise Home For Life Plan people aged 60+ can secure this property for up to 59% less, by purchasing a Lifetime Lease.



23410542/20240601/TF/JB2