



Price
£310,000

Leasehold

2x  1x  1x 

**Laton Place, Carlton
Road, Redhill, Surrey,
RH1**

OVER 60?

Secure this property
for up to **59% less!**

cubitt & west
Helping you move forwards



Main features

- Redhill £310,000
- Stunning 2 double bedroom first floor modern apartment
- Spacious, open plan lounge/kitchen
- Private balcony and allocated parking
- Ideal location in walking distance to Redhill Town Centre
- Photos are pre-tenancy

Accommodation

FIRST FLOOR

Kitchen/Lounge : 30'1 x 9'7 (9.18m x 2.92m)

Bedroom 1: 16'8 x 13'2 (5.08m x 4.02m)

Bedroom 2: 14'9 x 8'8 (4.50m x 2.64m)

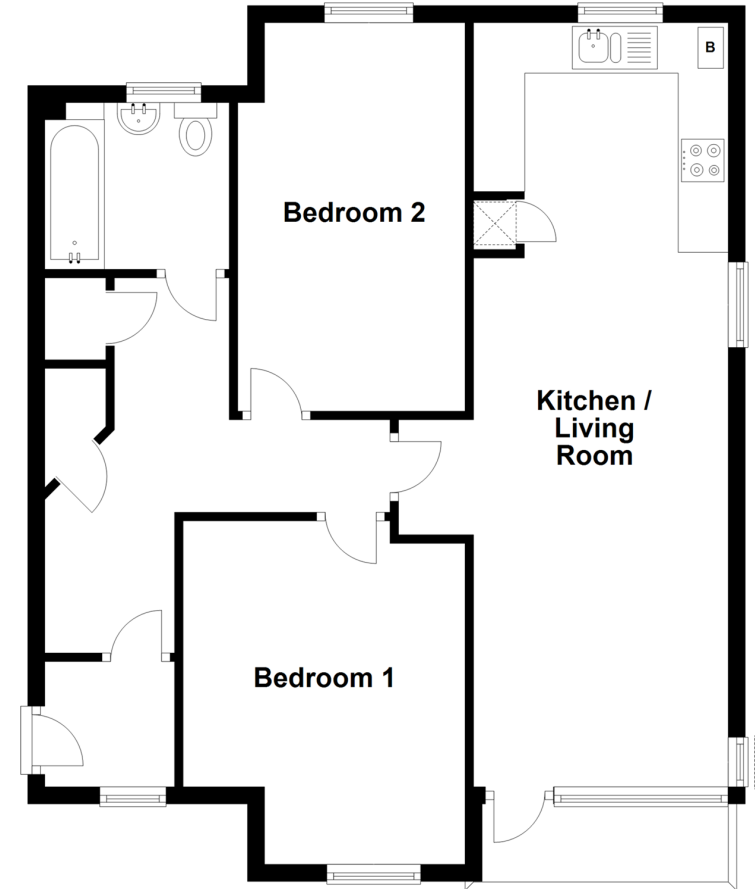
Bathroom: 6'9 x 6'3 (2.06m x 1.91m)

OUTSIDE

Parking Space
Communal Grounds

First Floor

Approx. 71.5 sq. metres (769.8 sq. feet)



Call Redhill - 01737 778866 ■ cubittandwest.co.uk

- Legal advice should be taken to verify fixtures/fittings, planning, alterations and/or lease details
- Appliances & services are untested, dimensions are approximate and floor plans are not to scale
- Through a Homewise Home For Life Plan people aged 60+ can secure this property for up to 59% less, by purchasing a Lifetime Lease.



23411231/20240413//MD