



Price

£300,000

Leasehold

2x  2x  1x 

Canalside, Redhill,
Surrey, RH1

OVER 60?

Secure this property
for up to **59% less!**

cubitt & west
Helping you move forwards



Main features

- Modern apartment in immaculate condition
- Spacious dual aspect living area
- Lounge/diner with an open plan fitted kitchen
- Private and sunny balcony
- Communal grounds with scenic views
- Stone throw away from Holmethorpe Lagoons Nature Reserve

Accommodation

FIRST FLOOR

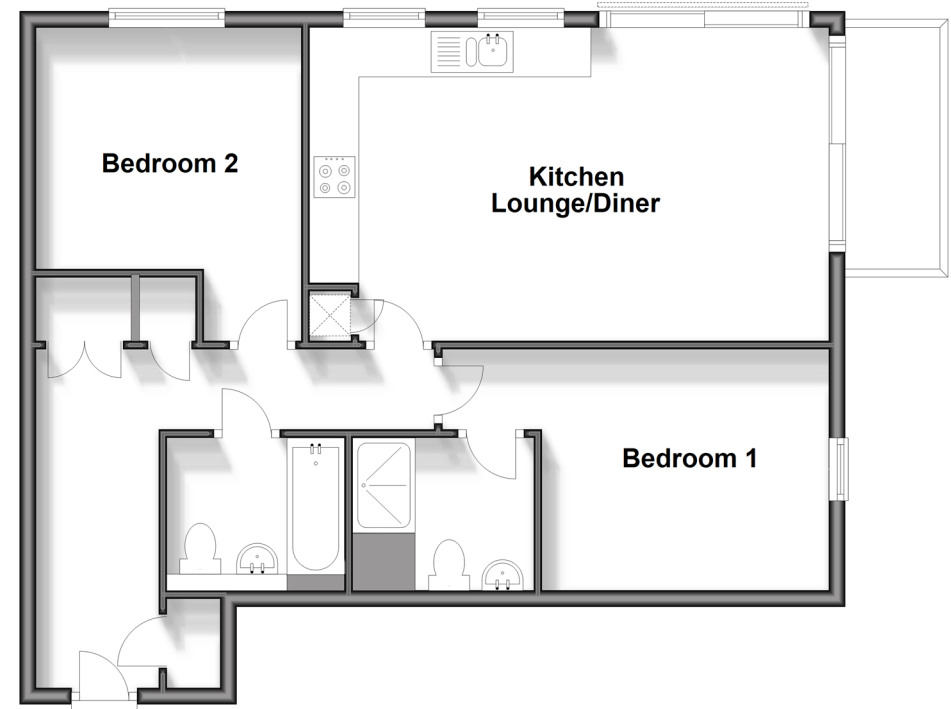
- Hallway
- Bedroom 2: 12'8 x 9'9 (3.86m x 2.97m)
- Bathroom
- Kitchen: 12'6 x 11'4 (3.81m x 3.46m)
- Lounge: 12'6 x 10'9 (3.81m x 3.28m)
- Balcony
- Bedroom 1: 16'3 x 9'7 (4.96m x 2.92m)
- Ensuite

OUTSIDE

- Allocated Parking Space
- Visitor Car Parking Space
- Bike Storage
- Communal Grounds

First Floor

Approx. 68.0 sq. metres (731.6 sq. feet)



Call Redhill - 01737 778866 ■ cubittandwest.co.uk

■ Legal advice should be taken to verify fixtures/fittings, planning, alterations and/or lease details
 ■ Through a Homewise Home For Life Plan people aged 60+ can secure this property for up to 59% less, by purchasing a Lifetime Lease.

■ Appliances & services are untested, dimensions are approximate and floor plans are not to scale



23411212/20240223/JB2/JB2