



Guide Price
£70,000

Leasehold

1x  1x  1x 

**Redlin Court, Linkfield
Lane, Redhill, Surrey,
RH1**

cubitt & west
Helping you move forwards



Main features

- Ground floor warden assisted retirement flat
- Own private entrance with ramp access and a patio area
- Communal lounge and laundry room
- Beautiful communal grounds
- Just a short walk into Redhill town centre

Accommodation

GROUND FLOOR

Entrance Hall

Lounge: 17'5 x 8'6 (5.31m x 2.59m)

Kitchen: 7'3 x 5'11 (2.21m x 1.80m)

Bedroom: 14'3 x 11'5 (4.35m x 3.48m)

Wet Room

OUTSIDE

Ramp Access

Private Patio Area

Residents Parking

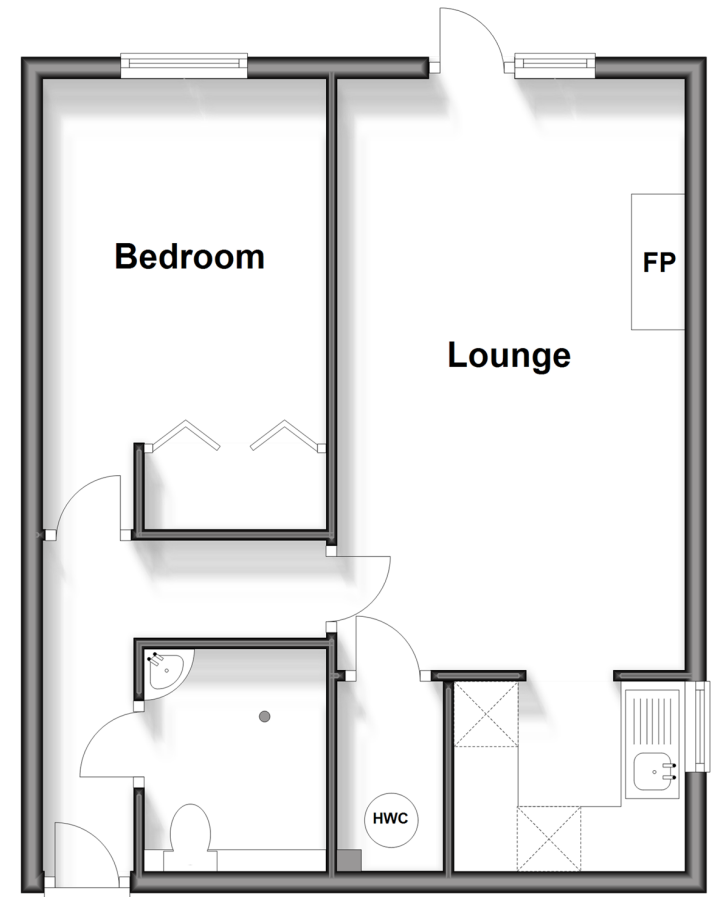
Communal Gardens

Residents Lounge

Communal Laundry Room

Ground Floor

Approx. 43.8 sq. metres (471.9 sq. feet)



Call Redhill - 01737 778866 ■ cubittandwest.co.uk

- Legal advice should be taken to verify fixtures/fittings, planning, alterations and/or lease details
- Appliances & services are untested, dimensions are approximate and floor plans are not to scale



23411197/20241030/JB2/JB2