



Price
£600,000

Freehold

4x  3x  1x 

**Caberfeigh Close,
Redhill, Surrey, RH1**

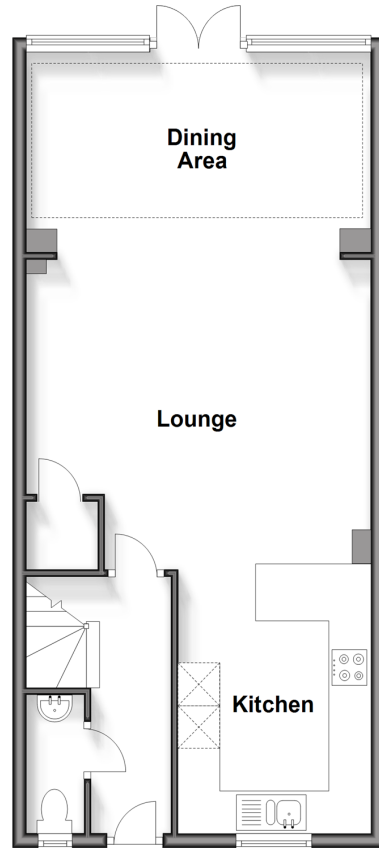
OVER 60?

Secure this property
for up to **59% less!**

cubitt & west
Helping you move forwards

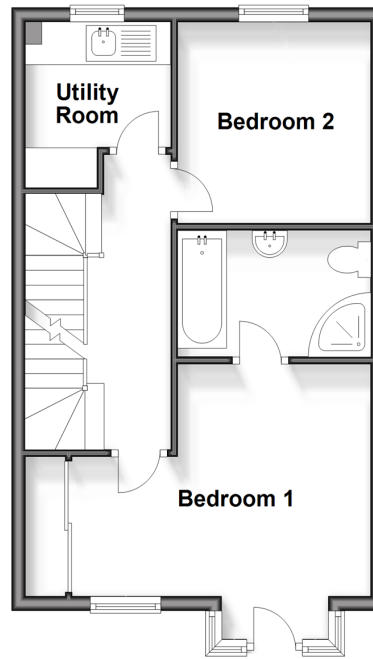
Ground Floor

Approx. 54.0 sq. metres (581.1 sq. feet)



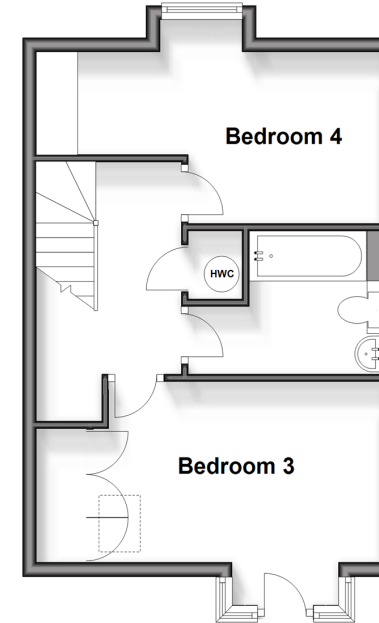
First Floor

Approx. 40.6 sq. metres (436.7 sq. feet)



Second Floor

Approx. 36.7 sq. metres (395.4 sq. feet)



Accommodation

GROUND FLOOR

Hallway

Cloakroom: 6'5 x 3'5 (1.96m x 1.04m)

Lounge: 16'0 x 14'4 (4.88m x 4.37m)

Dining Area: 16'0 x 8'2 (4.88m x 2.49m)

Kitchen: 15'4 x 9'3 (4.68m x 2.82m)

Utility Room: 6'8 x 6'8 (2.03m x 2.03m)

FIRST FLOOR

Landing

Bedroom 1: 14'4 x 10'1 (4.37m x 3.08m)

En suite: 8'4 x 6'1 (2.54m x 1.86m)

Bedroom 2: 10'5 x 9'6 (3.18m x 2.90m)

Bedroom 3: 14'4 x 8'7 (4.37m x 2.62m)

SECOND FLOOR

Landing

Bathroom: 9'8 x 6'5 (2.95m x 1.96m)

Bedroom 4: 12'9 x 8'3 (3.89m x 2.52m)

OUTSIDE

Driveway

Garden

Garage



Main features

- 4 bed semi-detached house with en-suite
- Modern finishings and fitted kitchen
- Sunny juliet balcony on both floors as well as large double glazed conservatory
- Ample parking with garage and off-road parking
- An ideal location in walking distance to Redhill Train station and multiple schools

Nearest Schools

Primary Schools: St Joseph's Catholic Primary, Redhill 0.3 miles, St Matthew's CofE Primary 0.8 miles, Wray Common Primary 0.9 miles
Secondary Schools: Reigate Grammar School 0.7 miles, Dunottar Day School for Girls 0.8 miles

Transport Information

Train Stations: Redhill 1.0 miles, Earlswood 1.2 miles, Reigate 1.5 miles

Address

Caberfeigh Close, Redhill, Surrey, RH1

Directions

For directions to this property please contact us.



cubitt&west
Helping you move forwards

Call Redhill Branch 01737 778866 ■ cubittandwest.co.uk



- Legal advice should be taken to verify fixtures/fittings, planning, alterations and/or lease details
- Appliances & services are untested, dimensions are approximate and floor plans are not to scale
- Through a Homewise Home For Life Plan people aged 60+ can secure this property for up to 59% less, by purchasing a Lifetime Lease.



23411206/20240224//JB2