



DOUGLAS & SIMMONS

238, Steventon Road, Drayton
Abingdon, Oxfordshire

238 Steventon Road, Drayton, Abingdon, Oxfordshire, OX13 6RN

Guide Price £460,000 Freehold

This much improved, mature 3 bedroomed semi-detached house enjoys an attractive location on the edge of Drayton adjoining the open countryside.

- Recently Extended • Modern kitchen diner family room • Countryside views • 3 Bedrooms • Modern family bathroom • Downstairs WC • Well positioned for Oxford and Abingdon • Close to Steventon Village



LOCATION

Drayton is a convenient and popular village in the outstanding countryside of the Vale of the White Horse, catering readily for everyday needs with a general store, post office, newsagent, hardware store, two pubs, a primary school and two churches, as well as a village hall and an 18 hole golf course. There are also bus routes to Oxford, Abingdon and surrounding villages. Drayton is very well placed for access to Oxford c.8 miles and market towns Abingdon c.2 miles and Wantage c. 8 miles.. Nearby Didcot (to the east) has main line train services to London (Paddington) c. 45 minutes. The area offers a vast choice of education with the excellent Abingdon and Oxford Schools, in addition to the European school at Culham, and with primary schools locally within Drayton itself and adjacent village of Steventon and Sutton Courtenay. The extensive Business Park at Milton is close at hand where the A34 (M40) Oxford – Newbury (M4) route can also be accessed.

DESCRIPTION

This much improved, mature 3 bedroomed semi-detached house enjoys an attractive location on the edge of Drayton adjoining the open countryside.

Having recently been extended to provide a stunning kitchen, diner, family room, which opens onto the large back garden, further features include a bright and spacious sitting room, utility, downstairs WC and a traditional entrance hall. To the 1st floor there are 3 bedrooms - 2 good sized doubles, and a modern bathroom. Outside there is a good sized front garden 41'x25' and drive providing parking for 2-3 vehicles comfortably. The rear garden is c.167'x25' in length adjoining to open fields.

The property is well placed for both Abingdon and Steventon, with both villages within walking distances where there are shops, schools, a post office and several pubs nearby.

EER-C

SERVICES

Gas central heating
All mains connected

FLOOR AREA

1011.00 sq ft

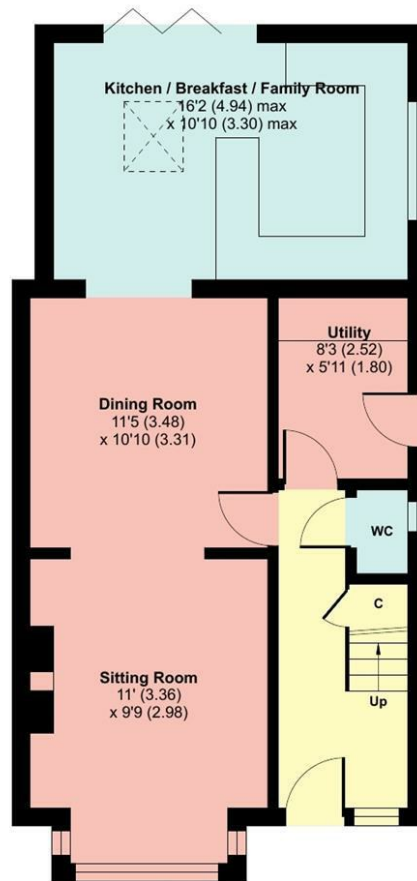
Vale of White Horse District Council
COUNCIL TAX BAND D



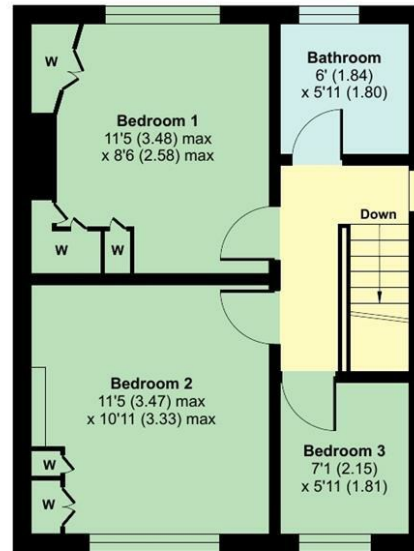
Steventon Road, Drayton, OX13

Approximate Area = 1011 sq ft / 93.9 sq m

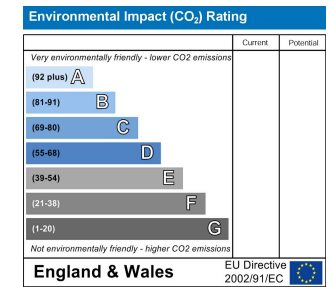
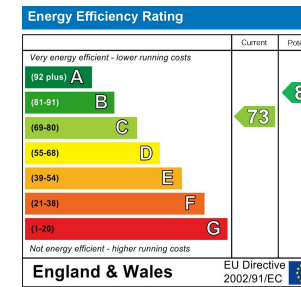
For identification only - Not to scale



GROUND FLOOR



FIRST FLOOR



DIRECTIONS TO OX13 6RN

what3words:///tiling.flagpole.knowledge As indicated by our D&S 'For Sale' board

Notice is given that all curtains, carpets, blinds, equipment, light fittings and fixtures, fitted or not are deemed to be removable by the Vendor unless specifically itemised in the sales particulars.

Important Notice

Douglas and Simmons for themselves and for the Vendors of this property, whose agents they are, given notice that:-

1. The particulars are intended to give a fair and substantially correct overall description for the guidance of intending purchasers and do not constitute part of an offer or contract. Prospective purchasers and lessees ought to seek their own professional advice.
2. All descriptions, dimensions, areas, reference to condition and necessary permissions for use and occupation and other details are given in good faith, and are believed to be correct, but any intending purchasers should not rely on them as statements or representations of fact, but must satisfy themselves by inspection or otherwise as to the correctness of each of them.
3. No person in the employment of Douglas and Simmons has any authority to make or give any representations or warranty whatever in relation to this property on behalf of Douglas and Simmons, nor enter into any contract on behalf of the Vendor.
4. No responsibility can be accepted for any expenses incurred by intending purchasers in inspecting properties which have been sold, let or withdrawn.
5. All measurements are approximate.

While we endeavour to make our sales particulars accurate and reliable if there is any point which is of particular importance to you, please contact this office and we will be pleased to check the information for you, particularly if contemplating travelling some distance to view the property.

Viewing strictly by appointment with the agents
Douglas and Simmons



25 Market Place
Wantage
Oxfordshire
OX12 8AE
Tel: 01235 766222
email: sales@douglasandsimmons.co.uk
www.douglasandsimmons.co.uk



26 Market Place
Wantage
Oxfordshire
OX12 8AE
Tel: 01235 766222
email: lettings@douglasandsimmons.co.uk
www.douglasandsimmons.co.uk



From time to time we re-use photographs of sold properties for advertising and marketing purposes. Upon purchasing a property, if you would prefer us not to use photographs of your new home, we are obliged to ask you to inform us in writing.

