



6, White Horse, Uffington  
Faringdon, Oxfordshire

# 6 White Horse, Uffington, Faringdon, Oxfordshire, SN7 7SE

## Guide Price £450,000 Freehold

Built in 1951, this mature three bedroom semi detached house is offered for sale with many appealing features, enjoying an attractive location near to the village green with a mixture of individual properties,.

- Extended extensively to the ground floor • Good sized plot with parking for 5/6 vehicles • Potential to enlarge further and/or convert the loft (STP) • Attractive no through lane location • Sitting room with open fireplace • Kitchen/dining/family room • Study/office • Snug/garden room • 3 first floor bedrooms and a family bathroom • Utility room and ground floor shower room



### LOCATION

The village of Uffington lies on the edge of the Vale of the White Horse, just north of the Berkshire Downs. Directly overlooking the village is the famous White Horse, a marvellous chalk figure which was cut into the hillside 3000 years ago. The village has a fine church, known as The Cathedral of the Vale, and an excellent museum, shop/newsagent, pre-school and primary school, pub, community hall, park and separate sports ground/club house as well as host of community clubs and organisations. Further information on village activities can be found on the village website [www.uffington.net](http://www.uffington.net). More comprehensive facilities are available at the nearby market towns of Wantage c.7 miles and Faringdon, 7.5 miles and Didcot to the East c.15.4 miles has a mainline train service to London Paddington (c.45 minutes). Abingdon c.15.2 miles, Oxford (M40 North) c.20miles and Swindon (M4 South) c.12.4 miles. Uffington has literary connections too. John Betjeman, Poet Laureate, lived in the village and Thomas Hughes, author of Tom Brown's School Days, was born at Uffington vicarage. Several of Hughes' books are based on local people and places; the museum is actually housed in the school featured in his most famous work.

## DESCRIPTION

Built in 1951, this mature three bedroom semi detached house is offered for sale with many appealing features, enjoying an attractive location near to the village green, within a mixture of individual properties.

The property has been extended significantly to the rear and side enlarging the ground floor overall which now provides a kitchen/dining/family room with a large kitchen island, a separate sitting room with an open fireplace, as well as a snug/garden room, separate study/office, downstairs shower room, with WC and a useful utility room.

To the first floor there are three good sized bedrooms and a family bathroom. The house has potential to further enhance the accommodation by way of a loft conversion, subject to the usual consent.

Set down this quiet village lane, the house enjoys really good sized gardens to the front, side and rear. The front garden measuring c.103' x 50' narrowing to c.15' providing parking for comfortably 5/6 vehicles, with potential to possibly build a garage subject to the usual consent. The rear garden measures c.82' x 37' narrowing to c.12'.  
EPC - E.

### SERVICES

All mains services connected except gas.  
Oil fired central heating via radiators.

## FLOOR AREA

1378.00 sq ft

Vale of White Horse District Council

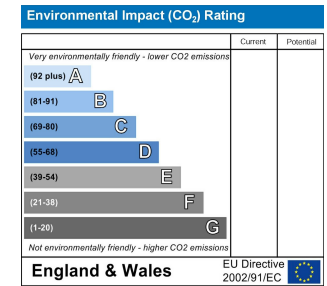
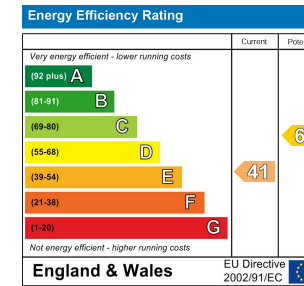
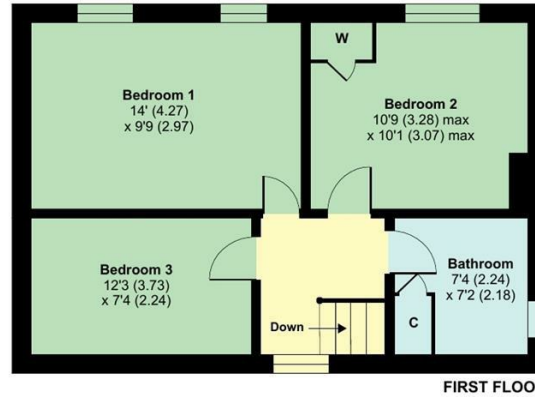
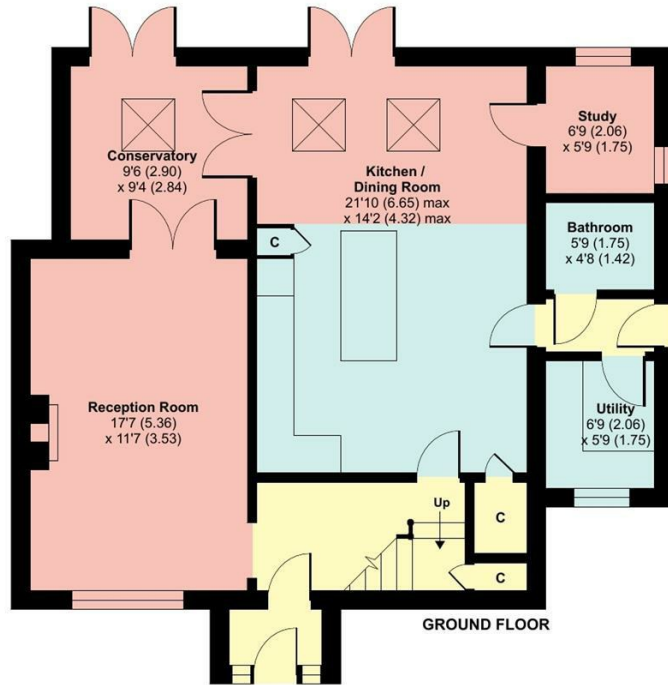
COUNCIL TAX BAND C



# White Horse, Uffington, Faringdon, SN7 7SE

Approximate Area = 1378 sq ft / 128 sq m

For identification only - Not to scale



## DIRECTIONS TO SN7 7SE

what3words: ///bugs.hillside.joke As indicated by our D&S For Sale board from the main village road (White Horse) off The Green into Lower Common Lane.

Floor plan produced in accordance with RICS Property Measurement Standards incorporating International Property Measurement Standards (IPMS2 Residential). © nichecom 2021. Produced for Douglas and Simmons Ltd. REF: 1109420

**Notice is given that all curtains, carpets, blinds, equipment, light fittings and fixtures, fitted or not are deemed to be removable by the Vendor unless specifically itemised in the sales particulars.**

### Important Notice

Douglas and Simmons for themselves and for the Vendors of this property, whose agents they are, given notice that:-

- The particulars are intended to give a fair and substantially correct overall description for the guidance of intending purchasers and do not constitute part of an offer or contract. Prospective purchasers and lessees ought to seek their own professional advice.
- All descriptions, dimensions, areas, reference to condition and necessary permissions for use and occupation and other details are given in good faith, and are believed to be correct, but any intending purchasers should not rely on them as statements or representations of fact, but must satisfy themselves by inspection or otherwise as to the correctness of each of them.
- No person in the employment of Douglas and Simmons has any authority to make or give any representations or warranty whatever in relation to this property on behalf of Douglas and Simmons, nor enter into any contract on behalf of the Vendor.
- No responsibility can be accepted for any expenses incurred by intending purchasers in inspecting properties which have been sold, let or withdrawn.
- All measurements are approximate. **GRD/rd 6 WH Uffington**

While we endeavour to make our sales particulars accurate and reliable if there is any point which is of particular importance to you, please contact this office and we will be pleased to check the information for you, particularly if contemplating travelling some distance to view the property.

**Viewing strictly by appointment with the agents**  
Douglas and Simmons



25 Market Place  
Wantage  
Oxfordshire  
OX12 8AE  
Tel: 01235 766222  
email: [sales@douglasandsimmons.co.uk](mailto:sales@douglasandsimmons.co.uk)  
[www.douglasandsimmons.co.uk](http://www.douglasandsimmons.co.uk)



26 Market Place  
Wantage  
Oxfordshire  
OX12 8AE  
Tel: 01235 766222

email: [lettings@douglasandsimmons.co.uk](mailto:lettings@douglasandsimmons.co.uk)  
[www.douglasandsimmons.co.uk](http://www.douglasandsimmons.co.uk)

From time to time we re-use photographs of sold properties for advertising and marketing purposes. Upon purchasing a property, if you would prefer us not to use photographs of your new home, we are obliged to ask you to inform us in writing.

