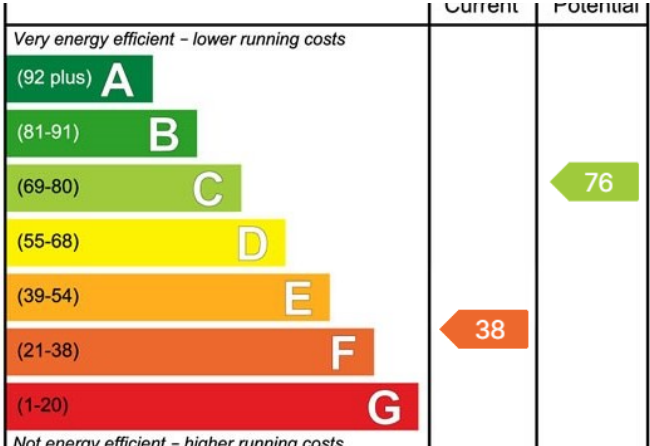


Erica Court, Swanley, BR8 8JA

£1,600PCM (Deposit: £1,846)

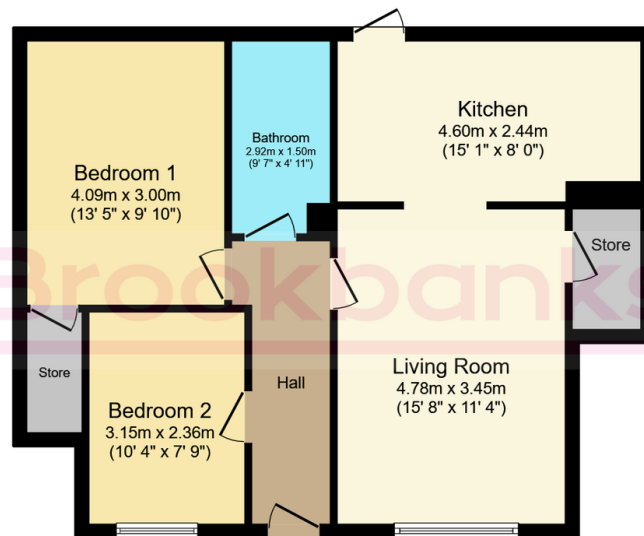
2 1 1



Tax Band: B
Furnished:

- Two double bedrooms
- Brand new modern kitchen
- Modern bathroom
- Direct garden access
- Includes secure garage
- Close to Swanley railway station
- Regular trains to Central London
- Easy access to local amenities
- Near highly rated schools
-

Erica Court, Swanley, BR8 8JA



Floor Plan

Floor area 63.3 sq.m. (681 sq.ft.)

Total floor area: 63.3 sq.m. (681 sq.ft.)

This floor plan is for illustrative purposes only. It is not drawn to scale. Any measurements, floor areas (including any total floor area), openings and orientations are approximate. No details are guaranteed, they cannot be relied upon for any purpose and do not form any part of any agreement. No liability is taken for any error, omission or misstatement. A party must rely upon its own inspection(s). Powered by www.Propertybox.io

Brookbanks

This immaculate two-bedroom flat in Erica Court, Swanley offers modern living with a brand new kitchen, garden access, garage, and easy access to local amenities, schools, green spaces, and excellent public transport links to London.