

Brookbanks  
Letting & moving.



**Brookbanks**

Estate Agents | Sales & Lettings

01322 666452

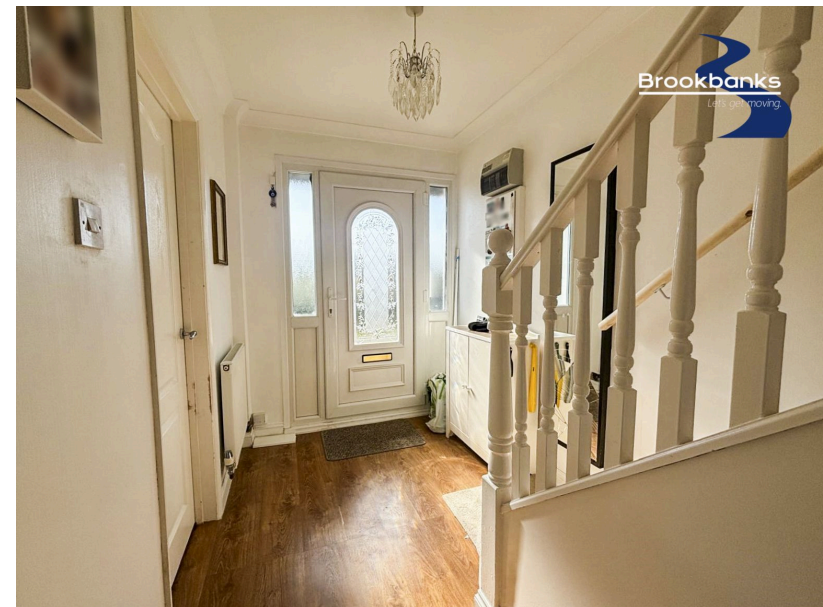
[sales@brookbanksonline.co.uk](mailto:sales@brookbanksonline.co.uk)



Fens Way, Hextable, Swanley, Kent, BR8

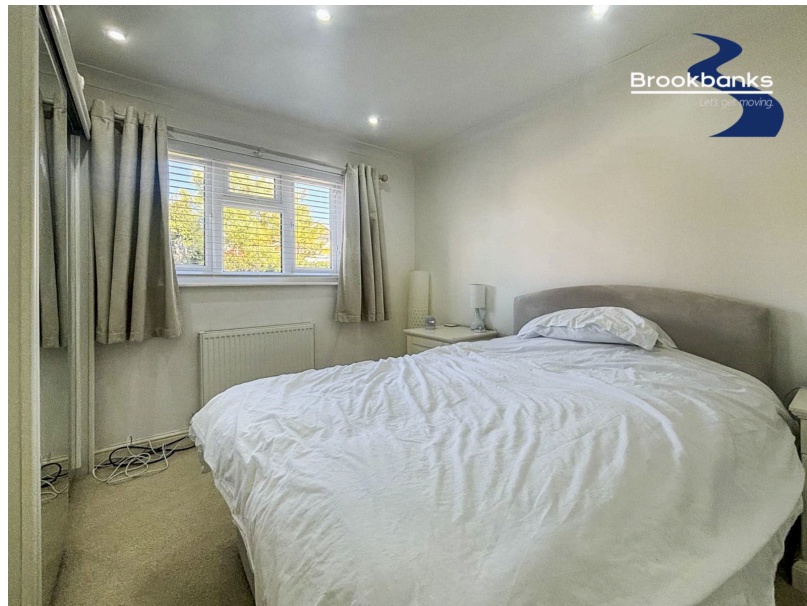
Guide Price £375,000

3 1 2





- PRICE GUIDE £375,000 TO £400,000
- Separate dining room for added convenience
- Driveway providing off-street parking
- Outside storage space for added practicality
- Just a 4-minute drive to Swanley Station for easy commuting
- Spacious three-bedroom end-of-terrace home
- Large rear garden, ideal for relaxation and outdoor activities
- Natural light floods the home with stunning countryside views
- Located in the popular village of Hextable
- Close to the M25 and A2, offering excellent transport links

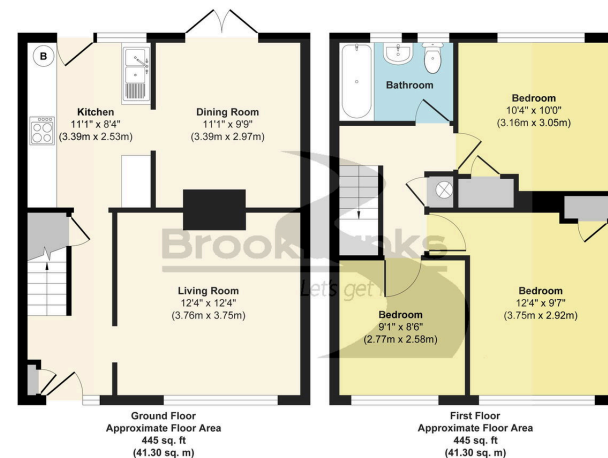






## PRICE GUIDE £375,000 - £400,000

Brookbanks are pleased to present this spacious three-bedroom end-of-terrace home in the popular village of Hextable. The property features generously sized bedrooms, a separate dining room, and a large rear garden, along with a driveway. Natural light fills the home, which enjoys stunning countryside views. Perfectly located for commuters, Swanley Station is just a 4-minute drive away, with easy access to the M25 and A2. This home offers a peaceful setting with excellent transport links, making it an ideal choice for families.



Approx. Gross Internal Floor Area 890 sq. ft. / 82.60 sq. m  
Illustration for identification purposes only, measurements are approximate, not to scale.  
Produced by Elements Property

Sales

01322 666452

sales@brookbanksonline.co.uk

41 High Street, Swanley, Kent, BR8 8AE



brookbanksonline.co.uk

Agents Notes: All measurements are approximate and quoted in metric with imperial equivalents and for general guidance only and whilst every attempt has been made to ensure accuracy, they must not be relied on. The fixtures, fittings and appliances referred to have not been tested and therefore no guarantee can be given that they are in working order. Internal photographs are reproduced for general information and it must not be inferred that any item shown is included with the property. For a free valuation, contact the numbers listed on the brochure

Managing Director Mr D. Williams FNAEA Director & Company Secretary: L. Williams | Registered in England No: 05007887 VAT No: 769144401