





# Moultain Hill, Swanley, Kent, BR8

Offers Over £375,000

3 1 1





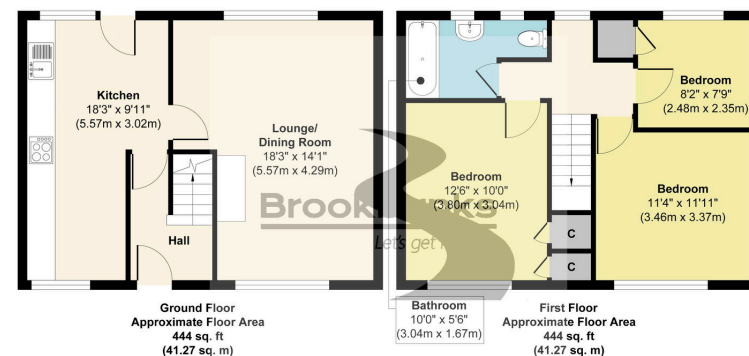
- Spacious 3-bedroom family home with plenty of living space
- Rear garden with convenient rear access for easy bin collection
- Just 2 minutes from the M25, offering quick access to surrounding areas
- Great potential for personalization and making it your own
- Quiet and desirable location, perfect for family living
- Large driveway with parking for 2 cars
- 20-minute walk to Swanley Station with direct links to central London
- Walking distance to local schools, ideal for families
- Flexible living areas perfect for entertaining or relaxing
- Close to local amenities and transport links for added convenience







Brookbanks are pleased to present this spacious 3-bedroom family home, offering ample living space and potential for buyers to make it their own. The property features a large driveway with space for two cars and a rear garden with rear access for added convenience. Ideally located, it's just a 20-minute walk to Swanley Station for easy access to central London, 2 minutes from the M25, and within walking distance to local schools. A perfect family home with excellent transport links and plenty of room to grow!



Sales

01322 666452

sales@brookbanksonline.co.uk

41 High Street, Swanley, Kent, BR8 8AE



brookbanksonline.co.uk

Agents Notes: All measurements are approximate and quoted in metric with imperial equivalents and for general guidance only and whilst every attempt has been made to ensure accuracy, they must not be relied on. The fixtures, fittings and appliances referred to have not been tested and therefore no guarantee can be given that they are in working order. Internal photographs are reproduced for general information and it must not be inferred that any item shown is included with the property. For a free valuation, contact the numbers listed on the brochure

Managing Director Mr D. Williams FNAEA Director & Company Secretary: L. Williams | Registered in England No: 05007887 | VAT No: 769144401