

The Spinney, Swanley, BR8

Offers Over £95,000

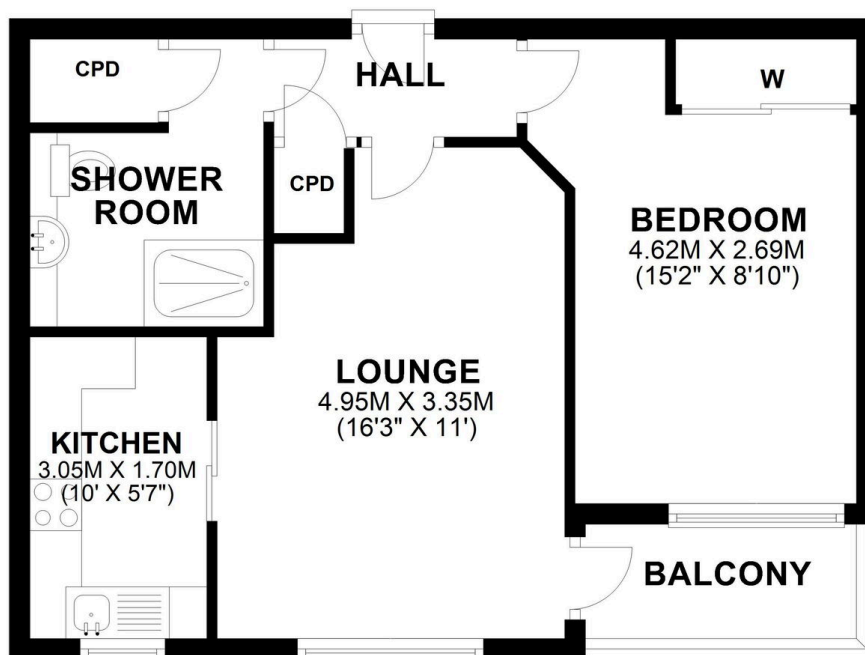
🛏 1 🚿 1 🚗 1



- One-bedroom apartment for over 55s
- Modern kitchen and stylish shower room
- Double glazing and efficient storage heaters throughout
- On-site warden and communal facilities, including lounge and laundry room
- Convenient location near town centre, shops, transport links, and Swanley Park
- Spacious 16' lounge with ample natural light
- Large 15' double bedroom with generous storage
- 24-hour link alarm system for added security
- Beautifully maintained communal gardens and guest suite for visitors

SECOND FLOOR

APPROX. 42.8 SQ. METRES (461.0 SQ. FEET)



TOTAL AREA: APPROX. 42.8 SQ. METRES (461.0 SQ. FEET)

A well-presented one-bedroom retirement apartment for over 55s, located on the second floor within the popular Inglewood development in Swanley. Just a short walk from the town centre, shops, transport links, and Swanley Park, the property features a spacious 16' lounge, modern kitchen, large double bedroom, and stylish shower room. Residents benefit from double glazing, storage heaters, and a 24-hour link alarm system. The development offers an on-site warden,

communal lounge, laundry facilities, guest suite, gardens, lift access, and parking. Early viewing is recommended as these properties are highly sought after.