



Wilmslow Road, Cheadle, SK8 1HG

Guide Price £200,000

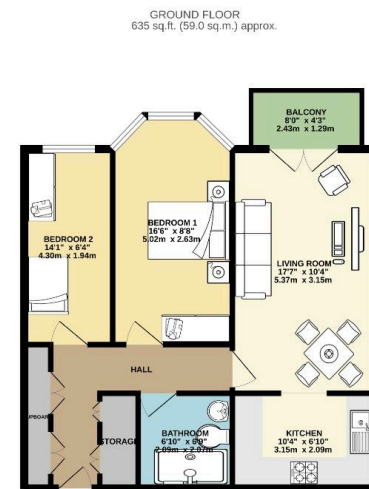
🛏 2 🚿 1 🛋 1

- Excellent first floor apartment
- Walking distance to Cheadle Village
- Balcony
- Large lounge
- Communal gardens
- Fully fitted Kitchen
- Two bedrooms
- EPC - TBC



Forming part of a popular retirement development set within beautifully maintained communal gardens, this impressive first-floor apartment is offered for sale and is sure to impress. The Whitegates development benefits from a residents' lounge and laundry facilities, along with the reassurance of an on-site resident warden and emergency pull-cords in all rooms. The well-presented accommodation briefly comprises a spacious entrance hall, an attractive lounge featuring a fireplace and access to a private balcony, a fitted kitchen, two bedrooms, and a re fitted bathroom with walk in shower and W.C.





TOTAL FLOOR AREA: 835 sq ft (59.5 sqm.) approx.