



Richmond Court, Gatley Road, SK8 1LX

Guide Price £294,000

 2  1  1

- Stunning Top Floor Apartment
- Recently Refurbished Throughout
- Beautiful Finish Throughout
- South Facing Rear Balcony
- Central Cheadle Location & Close to Gatley Train Station
- Two Double Bedrooms
- New Heating & Hot Water System
- Bright & Spacious Open Plan Living Space
- Garage & Off Road Parking
- Tenure - Leasehold / Council Tax Band - C / EPC - D

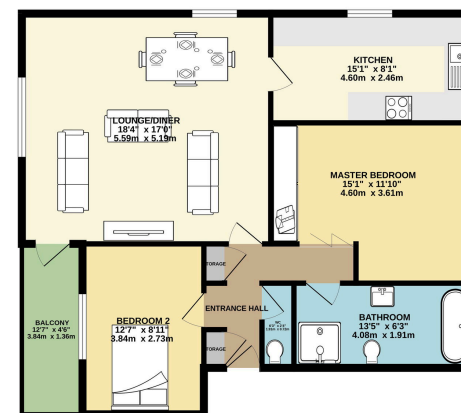


A truly stunning TOP FLOOR APARTMENT which has been COMPREHENSIVELY REFURBISHED AND UPDATED THROUGHOUT & BOASTS A SOUTH FACING BALCONY, situated within walking distance of BOTH CHEADLE AND GATLEY VILLAGE'S. The accommodation comprises of an entrance hallway with storage, beautiful open lounge dining room opening to a balcony, beautiful fitted kitchen with integrated appliances and two double bedrooms served by a stylish four piece family bathroom suite with a separate additional washroom. Externally, the development benefits from mature lawn communal gardens with a garage providing secure off road parking and storage. The garage also benefits from internal power.

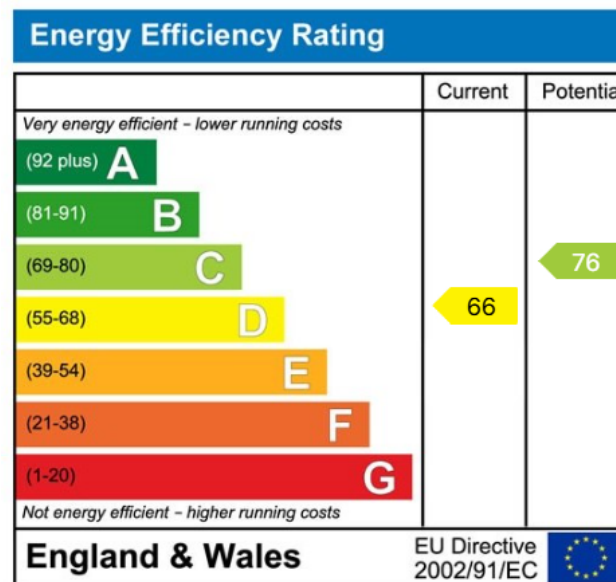




GROUND FLOOR
866 sq.ft. (80.4 sq.m.) approx.



TOTAL FLOOR AREA - 866 sq.ft. (80.4 sq.m.) approx.
We warrant that the information contained in this document is true and correct to the best of our knowledge and belief at the time of completion of this document. We do not warrant that the information contained in this document is true and correct at the time of completion of this document. The information contained in this document is for general information only and should not be relied upon for any specific purpose.



9 Gatley Road, Cheadle, Cheshire SK8 1LY Tel. 0161 428 1488 Fax. 0161 428 1479
Email. mail@andrewdawson.co.uk