



Greenvale Court, Cheadle, SK8 1QX

Guide Price £225,000

 2  1  1

- Ground Floor Apartment
- Two Double Bedrooms
- Woodland Views
- No Onward Vendor Chain
- Tenure - / EPC - TBC / Council Tax Band - C
- Central Cheadle Village Location
- Stylish Breakfast Kitchen
- Off Road Parking with Garage
- Three Piece Bathroom Suite

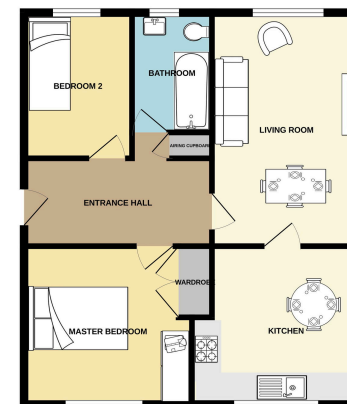


A delightful two bedroom apartment occupying a raised ground floor position within this fantastic development within the heart of Cheadle. The development is located in a quiet woodland enclave of Cheadle Village offering a high level of privacy whilst still having all that the village can offer on your door step! Cheadle Village benefits from a variety of shops and restaurants with a number of local transport links including Gatley Train Station offering links to Manchester City Centre and International Airport.

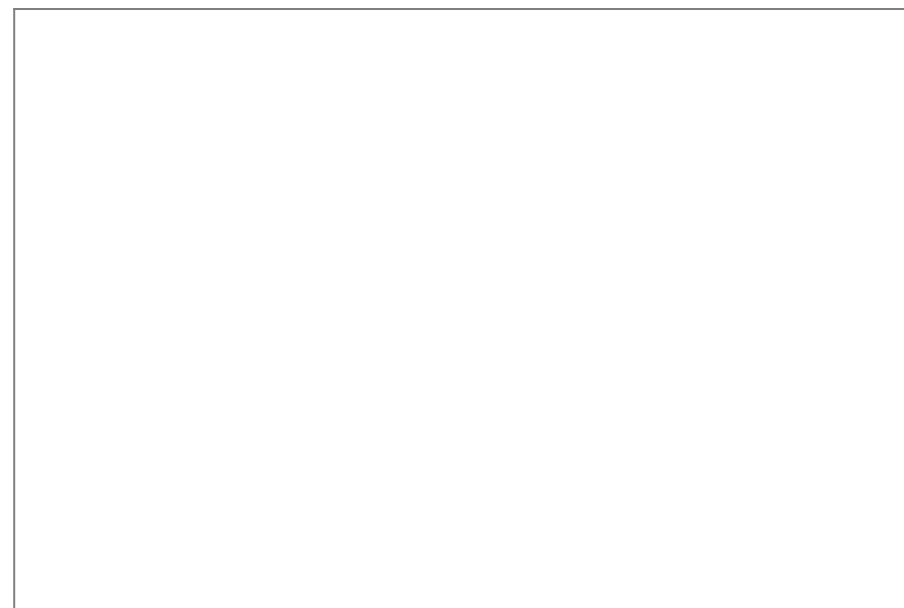




GROUND FLOOR
634 sq.ft. (58.9 sq.m.) approx.



TOTAL FLOOR AREA: 634 sq.ft. (58.9 sq.m.) approx.
While every effort has been made to ensure the accuracy of the floor plan, the seller does not warrant its accuracy. It is recommended that you verify the floor plan and measurements with the seller before making any offer. The floor plan is for information only and should not be used as a basis for any legal proceedings.



9 Gatley Road, Cheadle, Cheshire SK8 1LY Tel. 0161 428 1488 Fax. 0161 428 1479
Email. mail@andrewdawson.co.uk