





## 2 Watersedge Close, Cheadle Hulme

£395,000

3 0 0

- Three Bedroom Home
- Three / Four Reception Rooms
- Three Piece Family Bathroom with Ground Floor Shower Room
- Landscaped Rear Garden with Patio
- Quiet Cul De Sac Location
- Popular Twining Brook Road Estate Close to Cheadle Hulme
- Stylish Kitchen
- Utility Room
- Extensive Off Road Parking
- Tenure - / EPC - TBC / Council Tax Band - D

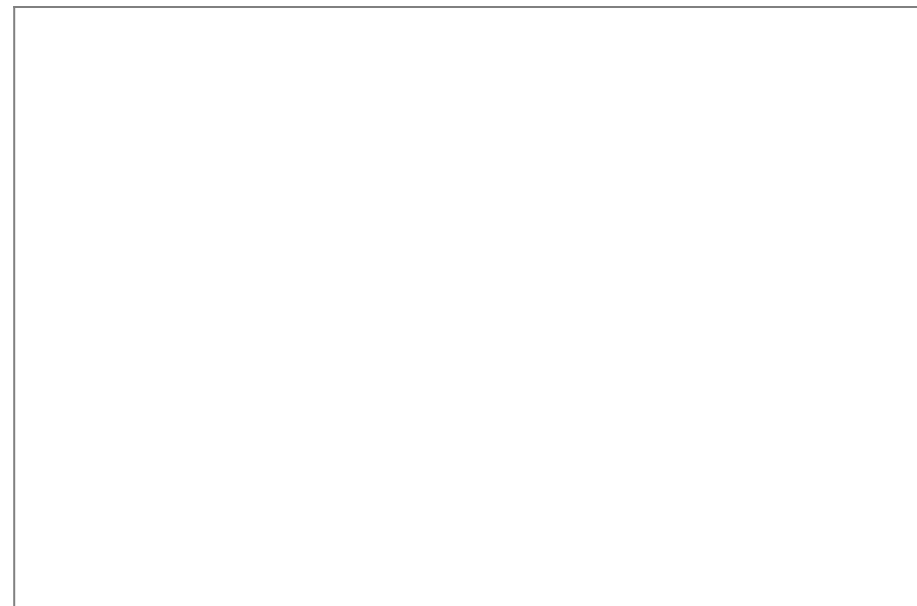
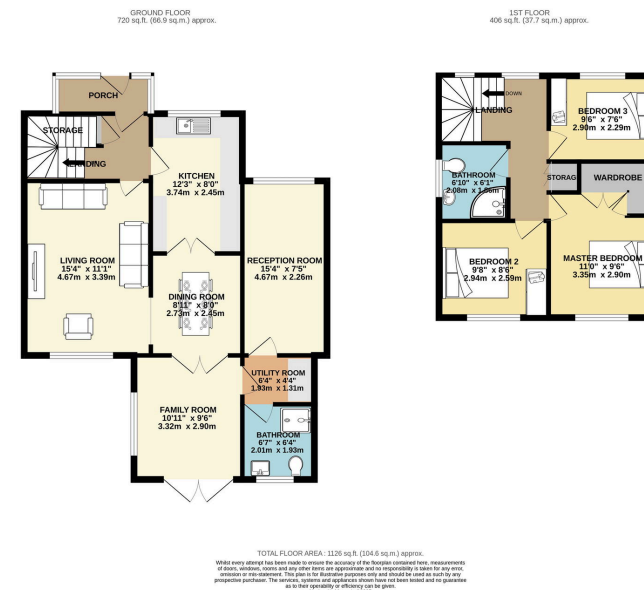


A delightfully presented and appointed three bedroom link detached family home situated on a quiet cul de sac upon the ever popular Twining Brook Road Estate. The home has been extended to create versatile family accommodation extending to circa 1126 sq ft. Watersedge Close is situated in a popular location within close proximity to Cheadle Hulme with walks being available to Bramhall Park and Cheadle Village. Cheadle Hulme is a fashionable village boasting a number of bars, shops and restaurants with the railway station providing links to Manchester and London.









9 Gatley Road, Cheadle, Cheshire SK8 1LY Tel. 0161 428 1488 Fax. 0161 428 1479  
Email. [mail@andrewdawson.co.uk](mailto:mail@andrewdawson.co.uk)