



Park Lodge Close, Cheadle

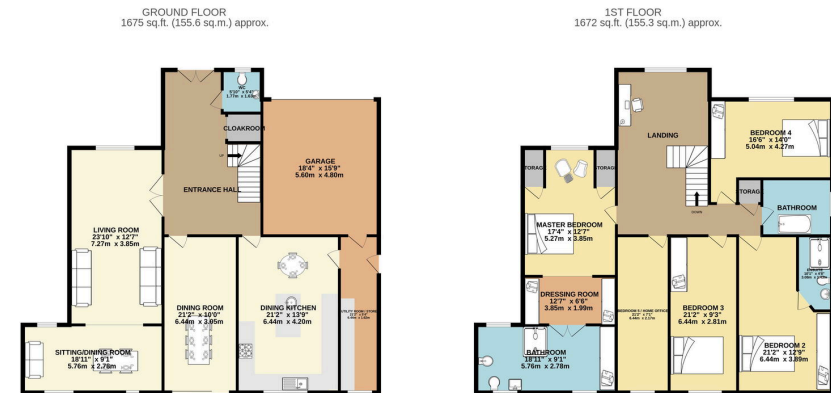
£899,000

5 3 3

- Large Detached Family Home Extending to Over 3000 sq ft
- Offered For Sale with No Onward Chain
- Extensive Off Road Parking with Double Garage
- Two Reception Rooms and Large Family Living Kitchen
- Viewing Essential
- Exceptional Location Close to Cheadle Hulme and Cheadle
- Fiver Large Double Bedrooms with Two En Suites
- Superb Plot Overlooking Cheadle Golf Club
- Ground Floor W.C, Cloak Room and Utility Room
- Tenure - Freehold / Council Tax - G / EPC - C



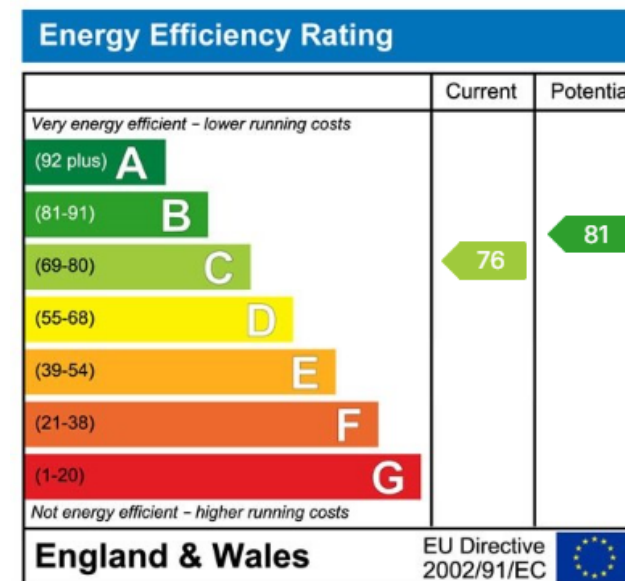




TOTAL FLOOR AREA: 3347 sq.ft. (310.9 sq.m.) approx.

While every effort has been made to ensure the accuracy of the foregoing contained here, measurements of doors, windows, rooms and any other items are approximate and no responsibility is taken for any error, omission or misstatement. This plan is for illustrative purposes only and should be used as such by any prospective purchaser. The services, systems and appliances shown have not been tested and no guarantee as to their operability or efficiency can be given.

Made with Metrepro C2025



9 Gatley Road, Cheadle, Cheshire SK8 1LY Tel. 0161 428 1488 Fax. 0161 428 1479
 Email. mail@andrewdawson.co.uk