



Sandycroft Avenue, Wythenshawe

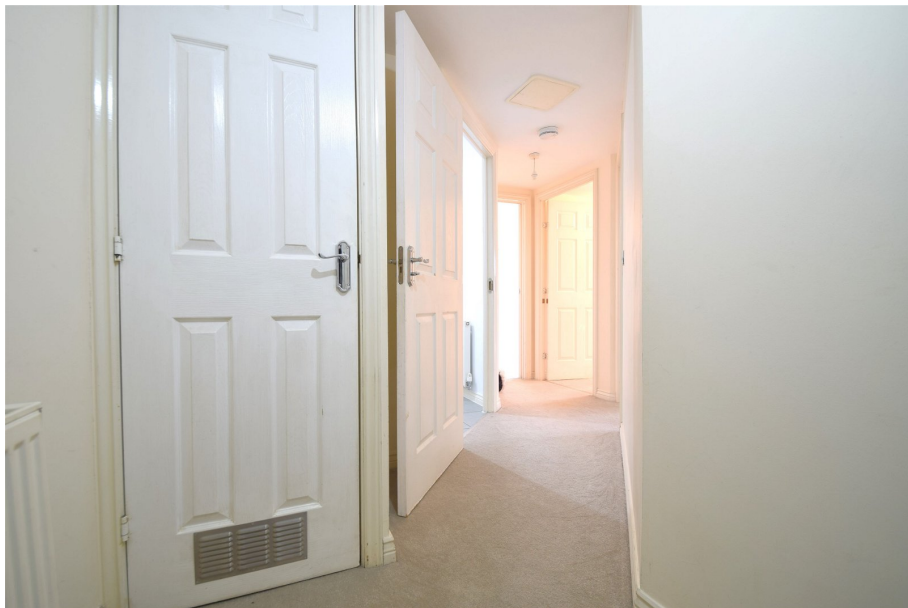
Guide Price £130,000

🛏 2 🚿 2 🛋 1

- FIRST FLOOR APARTMENT
- TWO BEDROOMS
- GATED DEVELOPMENT
- METROLINK WITHIN CLOSE PROXIMITY
- SPACIOUS LIVING ROOM WITH JULLIETTE BALCONY
- POPULAR LOCATION
- ALLOCATED PARKING SPACE
- NO ONWARD VENDOR CHAIN
- LEASEHOLD

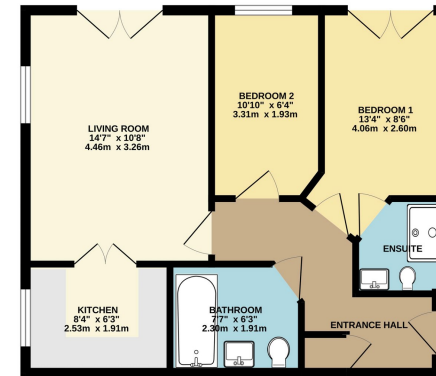


A well proportioned TWO BEDROOM APARTMENT, occupying a FIRST FLOOR POSITION within a popular modern development and OFFERED FOR SALE WITH NO ONWARD CHAIN. The accommodation comprises a communal hallway, entrance hallway with intercom, a spacious living room with julliette balcony, stylish kitchen with integrated appliances, two double bedrooms and is served by a white three piece bathroom suite and an ensuite shower room. Allocated off road parking. Lift to all floors.

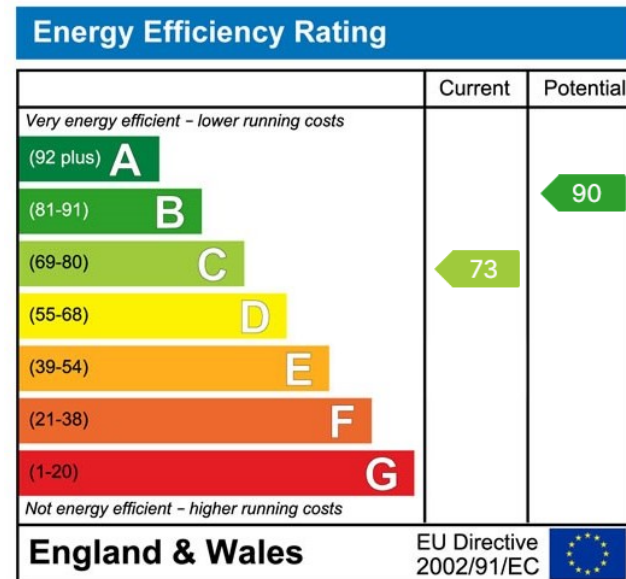




GROUND FLOOR
507 sq.ft. (47.1 sq.m.) approx.



TOTAL FLOOR AREA: 507 sq.ft. (47.1 sq.m.) approx.
These figures are based on the best available information and are not intended to be a guarantee of accuracy. The actual area may vary slightly from the figures shown. The figures are for information only and do not constitute a guarantee of accuracy. The figures are for information only and do not constitute a guarantee of accuracy. The figures are for information only and do not constitute a guarantee of accuracy.



9 Gatley Road, Cheadle, Cheshire SK8 1LY Tel. 0161 428 1488 Fax. 0161 428 1479
 Email. mail@andrewdawson.co.uk