



Mary Street, Cheadle Village

£460,000

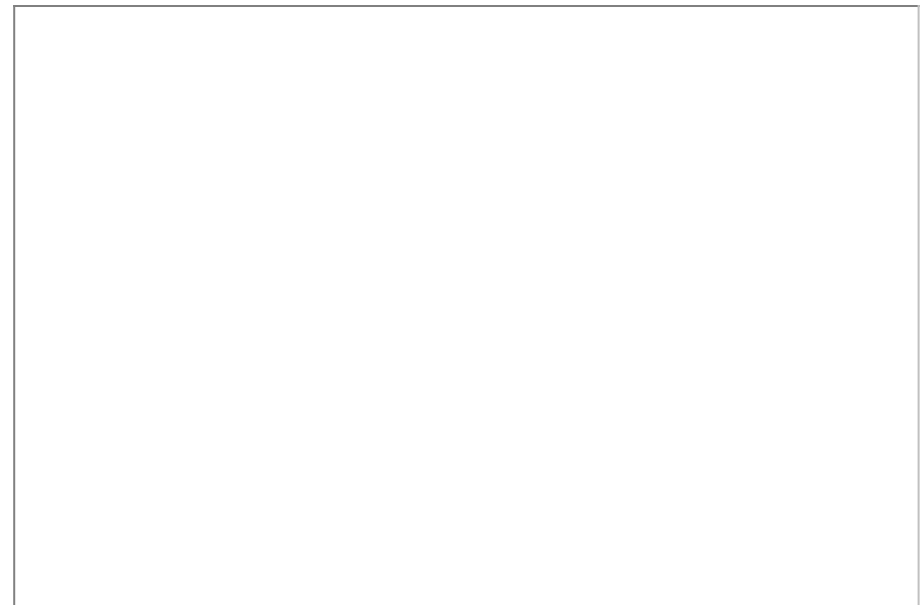
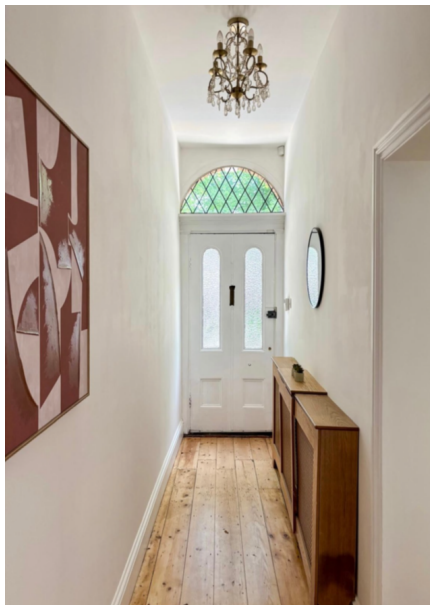
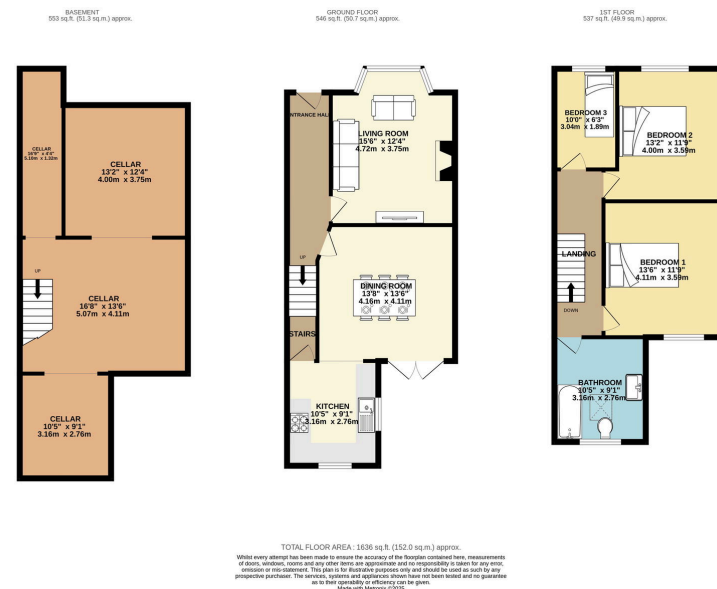
🛏 3 🚿 1 🛋 2

- Central Cheadle Conservation Area Location
- Full Cellars Prime for Conversion
- Large Three Piece Bathroom Suite
- Open Plan Kitchen & Dining Room
- Viewing Essential!
- Three Well Proportioned Bedrooms
- Beautifully Presented & Appointed Throughout
- Offered For Sale with No Onward Chain
- Bay Fronted Victorian Terrace
- Tenure - Freehold / EPC - TBC / Council Tax Band - D



A most impressive Victorian mid terrace offered for sale with no onward vendor chain. Retaining a host of it's original character and charm this excellent family home has been reconfigured to provide perfect accommodation for modern living. Mary Street is located within the centre of Cheadle Village with a range of fashionable shops, bars and cafe's within easy reach. The accommodation comprises of an entrance hallway, two large reception rooms, stylish kitchen, full cellars prime for conversion and three bedrooms and a large family bathroom suite.





9 Gatley Road, Cheadle, Cheshire SK8 1LY Tel. 0161 428 1488 Fax. 0161 428 1479
Email. mail@andrewdawson.co.uk