



Mount Grove, Gatley, Stockport

Offers Over £425,000

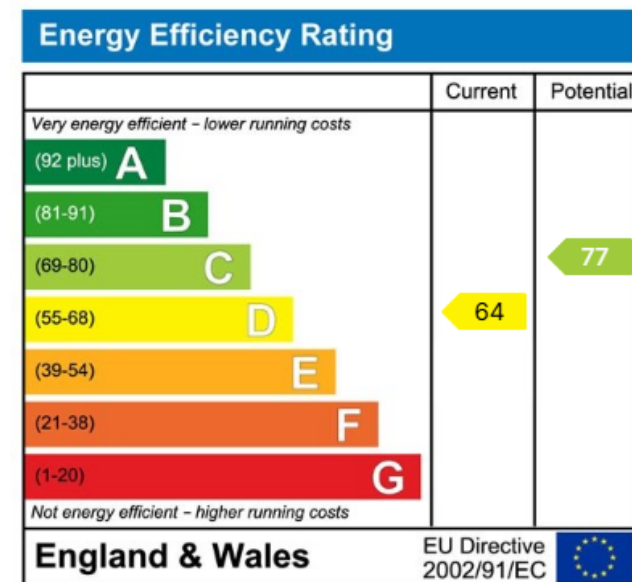
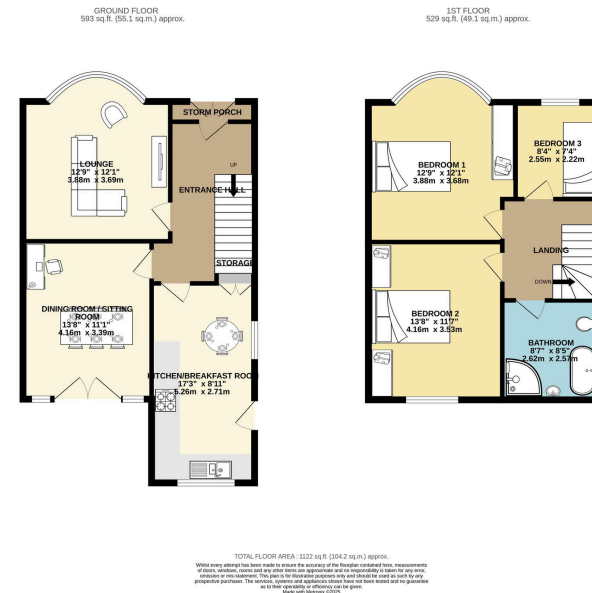
3 1 2

- Beautiful Three Bedroom Semi
- Large Lawn Garden Plot
- Excellent Room Proportions Throughout
- Quiet Cul De Sac Location
- Four Piece Family Bathroom Suite
- Period Features Throughout
- Close Proximity of Gatley Village
- Stylish Breakfast Kitchen
- Tenure - Freehold / EPC - TBC / Council Tax Band - D



A most impressive three bedroom semi detached home, occupying a large garden plot located on a popular cul de sac within the centre of Gatley Village. The accommodation comprises of an entrance porch, spacious entrance hallway, beautiful living room with feature bay window, sitting room / dining room, beautiful breakfast kitchen and three double bedrooms served by a four piece family bathroom suite. Externally, there is a large driveway providing considerable off road parking space in addition to a large rear garden with lawn and a number of patio area.





9 Gatley Road, Cheadle, Cheshire SK8 1LY Tel. 0161 428 1488 Fax. 0161 428 1479
Email. mail@andrewdawson.co.uk