



Marchbank Drive, Cheadle

Guide Price £710,000

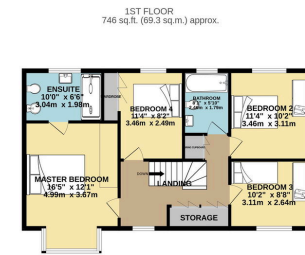
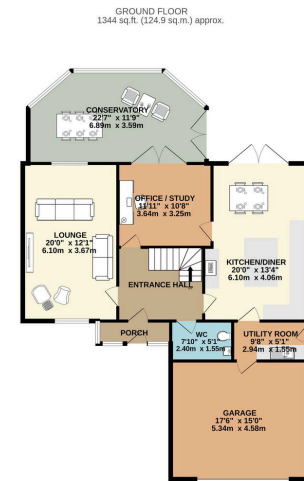
🛏 4 🚿 2 🛋 2

- Executive Detached Home
- Exclusive Location in The Heart of Cheadle
- Beautifully Appointed Decor Throughout
- Large Garden Plot with Summer House & Patio
- Tenure - Leasehold / EPC - TBC / Council Tax Band - G
- Four Well Proportioned Bedrooms
- Stylish Family Living Kitchen with Utility Room
- Two Reception Rooms & Large Conservatory
- Extensive Off Road Parking with Integral Double Garage



A truly wonderful executive detached home occupying a commanding position within the highly desirable Marchbank Estate. The accommodation comprises of an entrance hallway with wash room, large lounge with box bay window, stunning family living kitchen with utility room, study/office, conservatory. The first floor comprises of four double bedrooms served by a family bathroom suite and an en suite shower room. Externally, there is a large driveway leading to the double integral garage with an area of lawn frontage to the side. To the rear is a stunning rear garden with a number of patio areas and a large detached summer house.

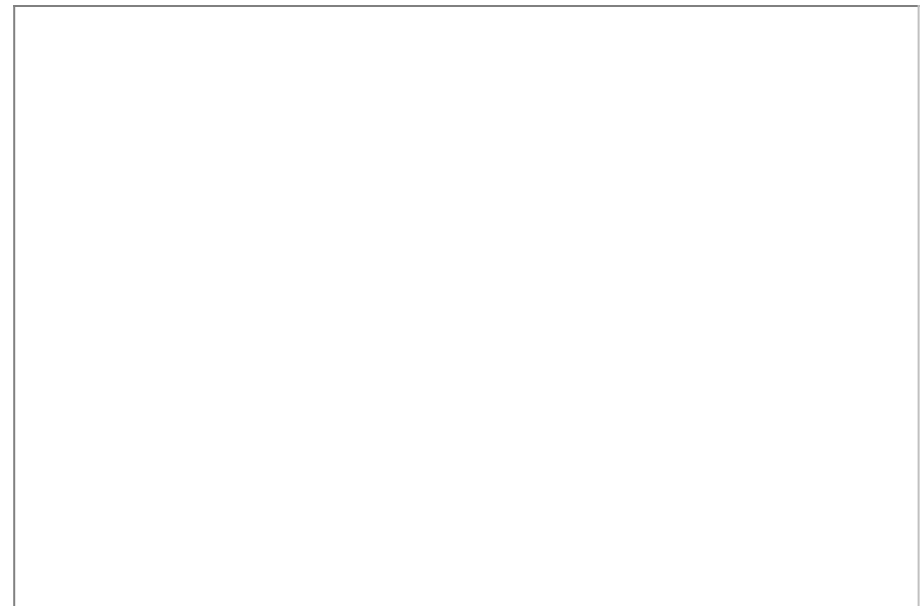




TOTAL FLOOR AREA: 2090 sq.ft. (194.2 sq.m.) approx.

Whilst every effort has been made to ensure the accuracy of the figures contained here, measurements of doors, windows, rooms and any other items are approximate and no responsibility is taken for any errors, omissions or mis-statements. This plan is for illustrative purposes only and should be used as a guide for any prospective purchaser. The services, appliances and equipment shown here are not shown to scale and no guarantee as to their operability or efficiency can be given.

Made with Metagame (2020)



9 Gatley Road, Cheadle, Cheshire SK8 1LY Tel. 0161 428 1488 Fax. 0161 428 1479
Email. mail@andrewdawson.co.uk