





## Eton Drive, Royal Park

Offers In Region Of £285,000

🛏 2 🍳 2 🛋 1

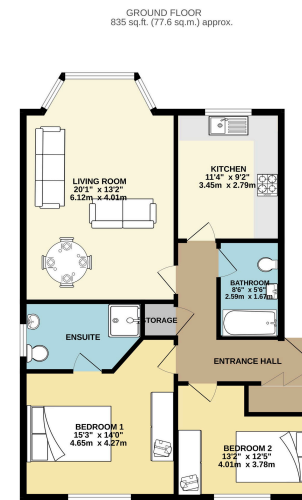
- Executive Apartment
- First Floor Development
- Exclusive Development Close to John Lewis
- No Onward Vendor Chain
- Master Suite with En Suite Shower Room
- Two Allocated Off Road Parking Spaces
- Lounge with Bay Window Extending to 20ft
- Modern Kitchen
- Three Piece Bathroom Suite
- Tenure - Leasehold / EPC - / Council Tax Band - E



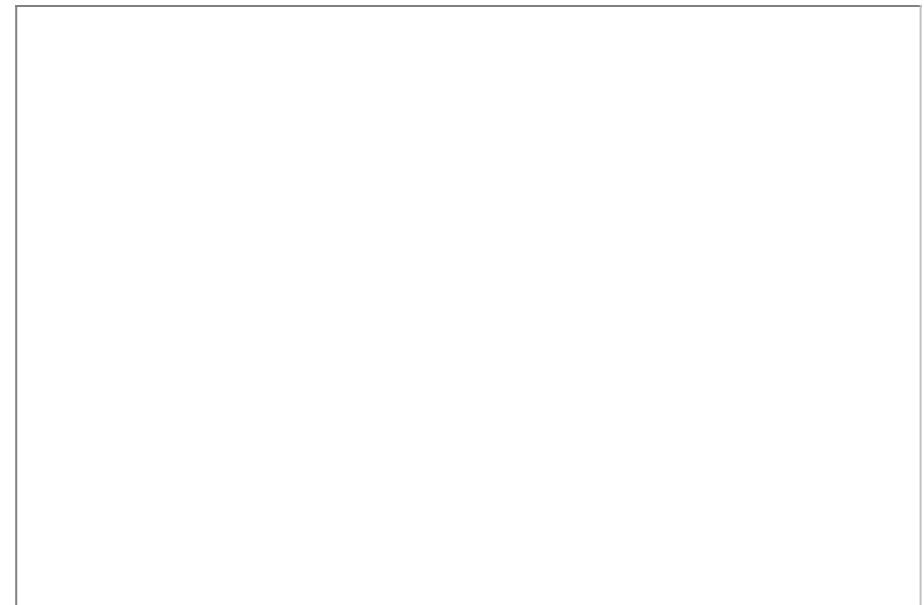
Offered for sale with NO ONWARD VENDOR CHAIN, is this spacious FIRST FLOOR APARTMENT situated within the HIGHLY DESIRABLE ROYAL PARK DEVELOPMENT. The accommodation comprises of a entrance hallway with storage, beautiful living room with bay window, modern kitchen, two double bedrooms including a master suite with en suite shower room and is further served by a modern family bathroom. Externally, there are communal gardens and two allocated parking spaces.







TOTAL FLOOR AREA: 835 sq.ft. (77.6 sq.m.) approx.  
While every attempt has been made to ensure the accuracy of the floorplan contained herein, representations of actual features, including but not limited to dimensions and measurements, are not intended to be used for any purpose other than for general reference only. The information contained herein is not to be relied upon and no guarantee is made for its accuracy or completeness.



9 Gatley Road, Cheadle, Cheshire SK8 1LY Tel. 0161 428 1488 Fax. 0161 428 1479  
Email. [mail@andrewdawson.co.uk](mailto:mail@andrewdawson.co.uk)