



Borrowdale Avenue, Gatley

£550,000

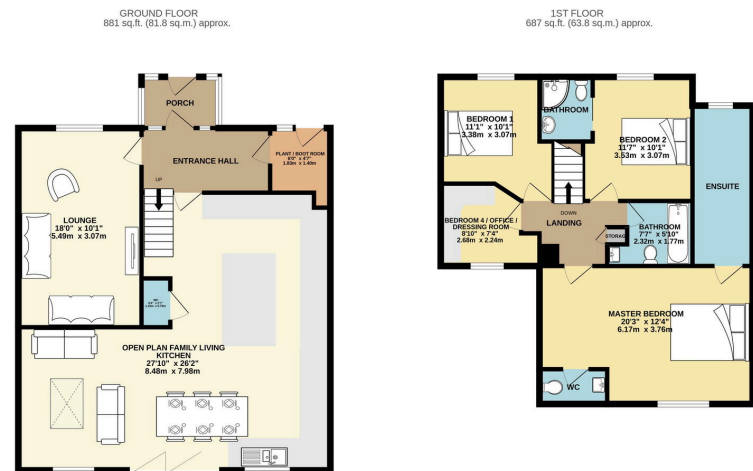
🛏 4 🚿 3 🛋 2

- Simply Stunning Semi Detached Home
- Four Bedrooms
- High Specification Family Living Kitchen with High End Appliances
- Off Road Parking and Beautiful Landscaped Garden with Summer House/office
- Viewing A must!
- Double Storey Side and Rear Extensions
- Luxury Master Suite with wash room and En Suite Jacuzzi Room
- Under Floor Heating Throughout Most of the Ground Floor
- Popular Location Close to Gatley Village and station
- Tenure - Freehold / EPC - TBC / Council Tax Band - C



A simply stunning EXTENDED FOUR BEDROOM semi detached family home, boasting a magnificent FAMILY LIVING KITCHEN and A LUXURIOUS LEVEL OF PRESENTATION THROUGHOUT. The accommodation comprises, entrance porch, hallway & plant room/boot room, spacious living room, magnificent family living kitchen with high end specification appliances, ground floor W.C, Four bedrooms including a master suite with wash room, en suite bath/shower room with superb Jacuzzi, in addition there is a stylish family bathroom and en suite shower room. Externally, there is a large driveway providing off road parking and a wonderful landscaped rear garden with summer house/office, decked terrace and barbecue area. NO EXPENSE HAS BEEN SPARED IN CREATING a HOME TRUE DISTINCTION AND AN INTERNAL VIEWING IS A MUST !

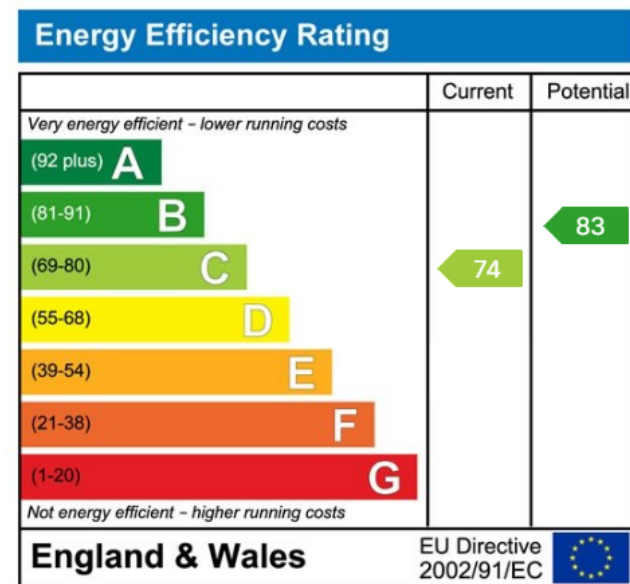




TOTAL FLOOR AREA: 1568 sq.ft. (145.7 sq.m.) approx.

Whilst every attempt has been made to ensure the accuracy of the floorplan contained here, measurements of doors, windows, stairs and any other details are approximate and no responsibility is taken for any error, omission or mis-statement. This plan is for illustrative purposes only and should be used as such by any prospective purchaser. The services, systems and appliances shown have not been tested and no guarantee as to their operability or efficiency can be given.

Made with Interplan ©2020



9 Gatley Road, Cheadle, Cheshire SK8 1LY Tel. 0161 428 1488 Fax. 0161 428 1479
Email. mail@andrewdawson.co.uk