



5 Richmond Court, 93 Gatley Road

£300,000

🛏 0 🍳 0 🚗 0

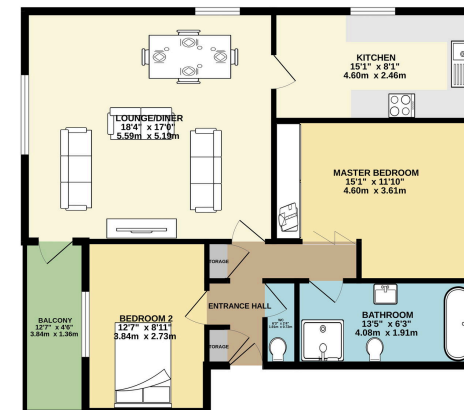
- Stunning Top Floor Apartment
- Recently Refurbished Throughout
- Beautiful Finish Throughout
- South Facing Rear Balcony
- Central Cheadle Location & Close to Gatley Train Station
- Two Double Bedrooms
- New Heating & Hot Water System
- Bright & Spacious Open Plan Living Space
- Garage & Off Road Parking
- Tenure - Leasehold / Council Tax Band - C / EPC - TBC



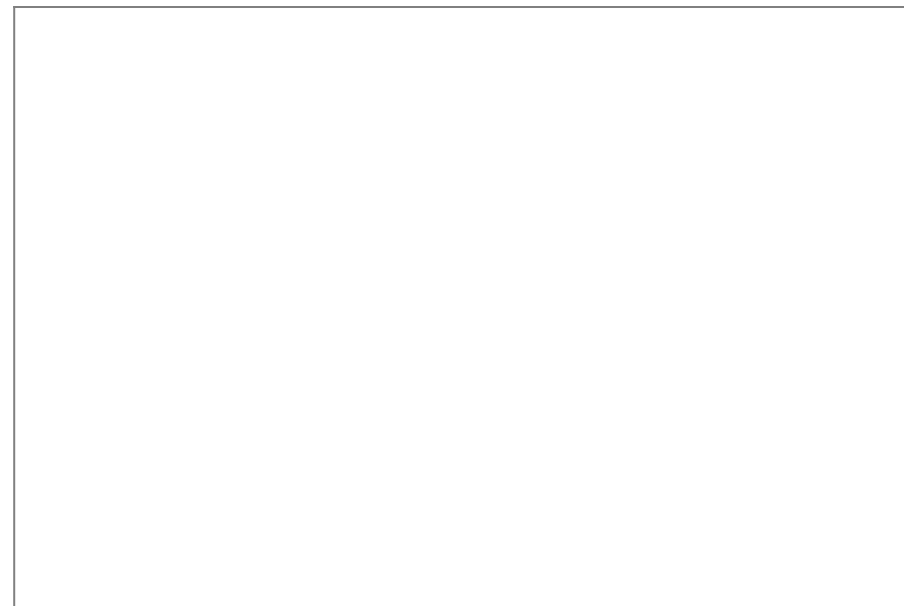




GROUND FLOOR
886 sq.ft. (80.4 sq.m.) approx.



TOTAL FLOOR AREA: 886 sq.ft. (80.4 sq.m.) approx.
While every effort has been made to ensure the accuracy of the floor plan, the seller does not warrant its accuracy. The floor plan is for information only and should not be used as a basis for any decision. The actual layout and dimensions may vary from the floor plan. The floor plan is not to scale.



9 Gatley Road, Cheadle, Cheshire SK8 1LY Tel. 0161 428 1488 Fax. 0161 428 1479
Email. mail@andrewdawson.co.uk