



Coniston Court, Sharston

Offers In Region Of £155,000

🛏 2 🚿 1 🛋 1

- Two Bedroom Apartment
- First Floor Position
- Offered For Sale With No Chain
- Popular Location
- Three Piece Bathroom Suite
- Allocated Parking Space
- Modern Popular Development
- Tenure - Leasehold / Council Tax Band - B / EPC - TBC

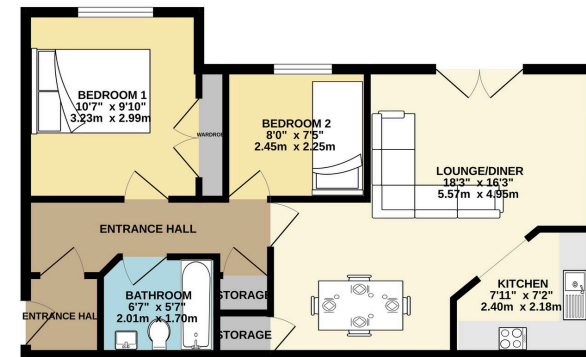


A well presented TWO BEDROOM FIRST FLOOR APARTMENT, located within easy reach of GATLEY VILLAGE CENTRE AND OFFERED FOR SALE WITH NO ONWARD CHAIN. The accommodation comprises of an entrance hallway with storage and intercom, open plan lounge diner with Juliette balcony, kitchen with integrated appliances, two well proportioned bedrooms and is served by a three piece family bathroom. Allocated Parking.





GROUND FLOOR
554 sq.ft. (51.5 sq.m.) approx.



TOTAL FLOOR AREA: 554 sq.ft. (51.5 sq.m.) approx.
 Whilst every effort has been made to ensure the accuracy of the figures contained here, measurements of rooms, windows, doors and any other items are approximate and no responsibility is taken for any errors, omissions or misstatements. This plan is for information purposes only and should be used as such by any prospective purchaser. The service, quality and appearance shown here are for information only and no guarantee as to their accuracy or efficiency can be given.
 Made with Metreplan 12/05

