



Apartment 14, Moseley Court, 35, Moseley Road, Cheadle Hulme

£250,000

🛏 2 🍽 1 🛋 2

- Top Floor Apartment
- Two Double Bedrooms
- Stylish Presentation Throughout
- Beautiful Open Plan Living Room
- Kitchen with Integrated Appliances
- Master Suite with En Suite Shower Room
- Secure Gated Development
- Fantastic Location Close to Cheadle and Cheadle Hulme
- Lift to All Floors
- Tenure - Leasehold / EPC - TBC / Council Tax Band - B

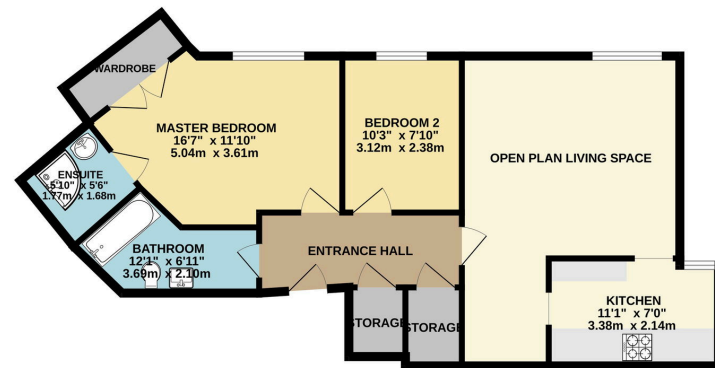


A stylish apartment OCCUPYING A TOP FLOOR POSITION within this POPULAR GATED DEVELOPMENT, located within easy reach of both CHEADLE & CHEADLE HULME VILLAGES. The accommodation comprises of an entrance hallway with intercom and storage, a fantastic open plan living space with beautiful fitted kitchen, two double bedrooms including a master suite with en suite shower room and is further served by three piece bathroom suite.

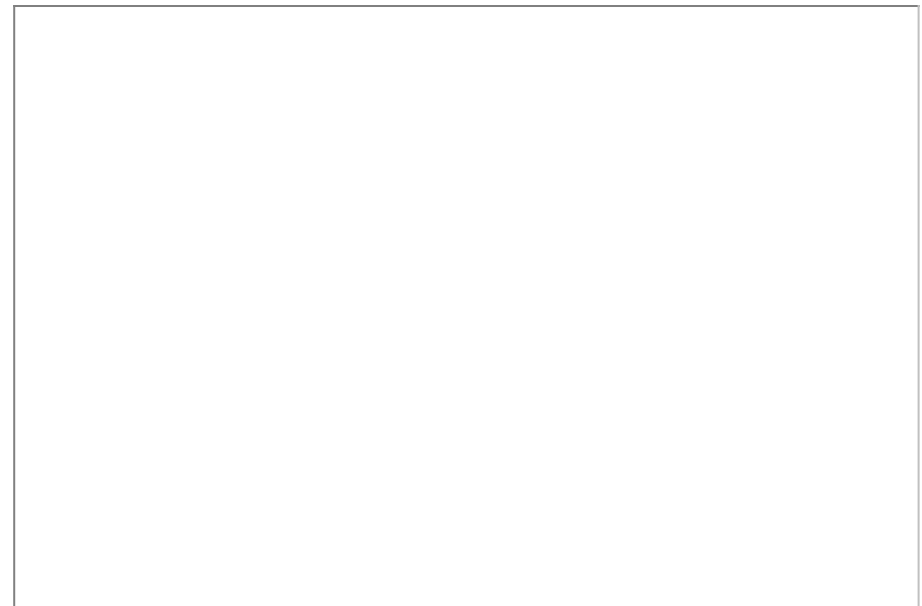




GROUND FLOOR



Whilst every attempt has been made to ensure the accuracy of the floorplan contained here, measurements of rooms, sections, floors and any other details are approximate and no responsibility is taken for any error, omission or misstatement. This plan is for illustrative purposes only and should be used as such by any prospective purchaser. The services, systems and appliances shown have not been tested and no guarantee as to their operability or efficiency can be given.
Made with floorplan 12/2023



9 Gatley Road, Cheadle, Cheshire SK8 1LY Tel. 0161 428 1488 Fax. 0161 428 1479
Email. mail@andrewdawson.co.uk