



47 Florist Street

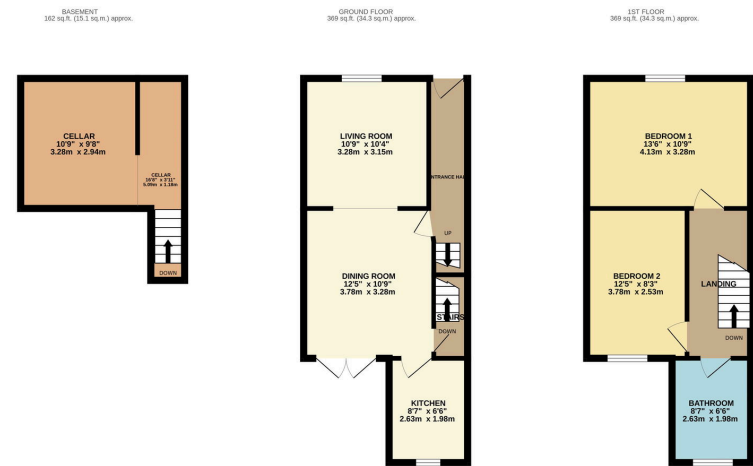
£175,000

🛏️ 2 🪑 1 🛋️ 2

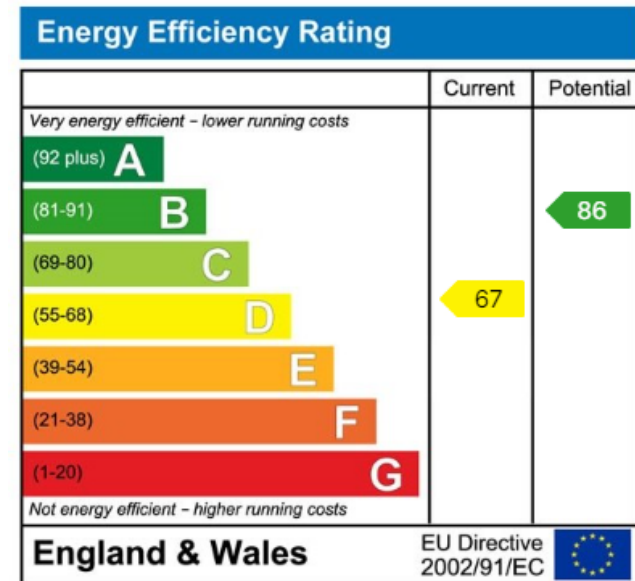
- Two Bedroom Period Mid Terrace
- Ideal Investment Opportunity or First Time Buy
- Open Plan Lounge & Dining Room
- Unconverted Cellars
- Offered For Sale with No Chain
- Popular Shaw Heath Location
- Recently Decorated Throughout
- Four Piece Family Bathroom Suite
- Close Proximity to Stockport Centre
- Tenure - / EPC - / Council Tax Band - B







TOTAL FLOOR AREA: 900 sq ft (83.7 sq m) approx.
 Whilst every attempt has been made to ensure the accuracy of the floorplan contained herein, measurements of doors, windows, floors and any other features are approximate and no responsibility is taken for any errors, omissions or mis-statements. This plan is for illustrative purposes only and should be used as such by any prospective purchaser. The services, systems and appliances shown have not been tested and no guarantee as to their operability or efficiency can be given.
 Made with Homestyler ©2014



9 Gatley Road, Cheadle, Cheshire SK8 1LY Tel. 0161 428 1488 Fax. 0161 428 1479
 Email. mail@andrewdawson.co.uk