



Malvern Avenue, Gatley

Guide Price £450,000

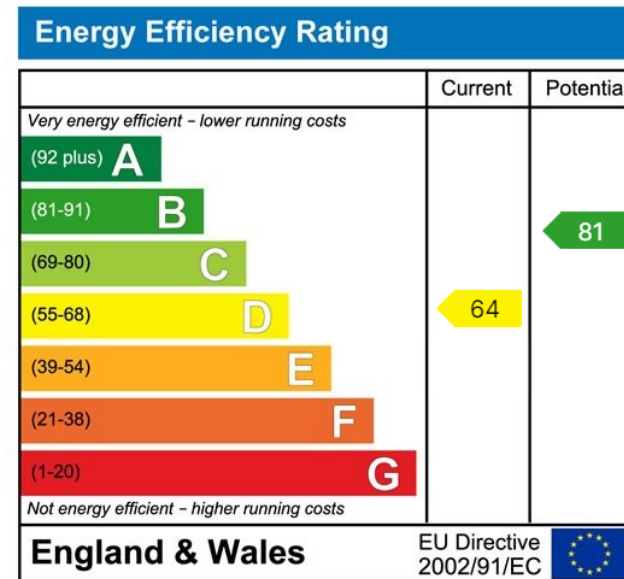
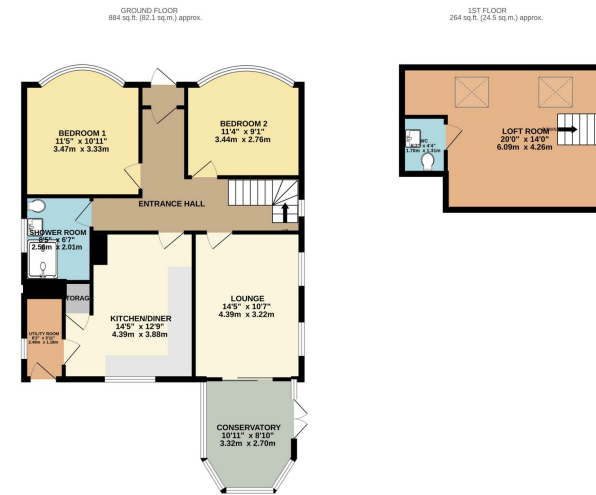
3 1 1

- EXTENDED DETACHED BUNGALOW
- STUNNING LANDSCAPED GARDEN
- MODERN SHOWER ROOM
- SHORT WALK TO GATLEY
- LARGE PLOT
- HEAD OF CUL-DE-SAC LOCATION
- TWO DOUBLE BEDROOMS
- STYLISH DINING KITCHEN
- DETACHED GARAGE
- EXTENSIVE OFF ROAD PARKING



A charming EXTENDED DETACHED BUNGALOW, occupying a LARGE CORNER GARDEN POSITION at the head of this popular cul-de-sac, within a SHORT STROLL OF GATLEY VILLAGE. The accommodation comprises of an entrance porch, a welcoming entrance hallway, beautifully presented lounge opening to a delightful rear conservatory, there is a stylish contemporary dining kitchen and utility area. There are two double bedrooms, and a loft room served by a modern shower room and upstairs wash room. Externally, the property occupies a landscaped corner garden plot with a number of outbuildings and detached garage.





9 Gatley Road, Cheadle, Cheshire SK8 1LY Tel. 0161 428 1488 Fax. 0161 428 1479
Email. mail@andrewdawson.co.uk