



Andrew J.
Dawson
Independent Estate Agents

Handforth Grove, Longsight

Offers In Region Of £230,000

3 1 2

- No Chain
- Cash Buyers Only
- Close to Manchester Grammar School
- Off Road Parking
- Three Bedrooms
- Quiet Cul De Sac Location
- Two Reception Rooms
- Survey Available To Be Viewed Upon Request
- Viewing Essential
- EPC - TBC / Tenure - Leasehold / Council Tax Band - B

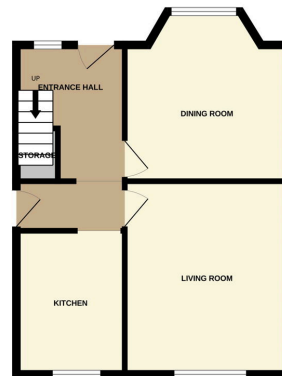


CASH BUYERS ONLY - A well proportioned three bedroom semi detached home situated on a QUIET CUL DE SAC within easy reach of MANCHESTER GRAMMAR SCHOOL. The accommodation comprises of an entrance hallway, dining room with bay window, large lounge, kitchen and under stairs pantry, the first floor reveals three well sized bedrooms served by a bathroom with separate W.C. Externally, there are gardens front and back with concrete patio and lawn area. Offered for sale with no chain.





GROUND FLOOR
443 sq.ft. (41.1 sq.m.) approx.



1ST FLOOR
443 sq.ft. (41.1 sq.m.) approx.



TOTAL FLOOR AREA: 885 sq.ft. (82.3 sq.m.) approx.

Whilst every attempt has been made to ensure the accuracy of the floorplan contained here, measurements of rooms, windows, doors and any other areas are approximate and no responsibility is taken for any error, omission or mis-statement. This plan is for illustrative purposes only and should not be used as such by any prospective purchaser. The services, systems and appliances shown have not been tested and no guarantee as to their operability or efficiency can be given.
Made with Metreplan 2004

