



Laurieston Court, Cheadle

Offers In Region Of £180,000

🛏 2 🚿 1 🚗 1

- Top Floor Apartment
- Two Bedrooms
- Stylish Shower Room
- Popular Development
- Allocated Parking
- Communal Gardens
- Dual Aspect Living Area
- Good Storage Space
- EPC - TBC / Council Tax Band - D / Tenure - Leasehold
- Viewing Essential

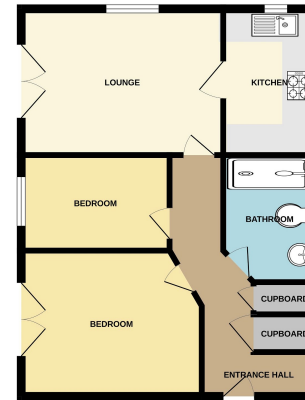


A well presented TWO BEDROOM APARTMENT, occupying a SECOND FLOOR POSITION within this MODERN DEVELOPMENT within the centre of CHEADLE VILLAGE. The accommodation comprises of an entrance hallway with storage and intercom, spacious dual aspect lounge with Juliette balcony, well appointed kitchen with integrated appliances, two bedrooms and a recently fitted shower room. Externally, there are communal gardens with allocated resident parking and visitor parking spaces.

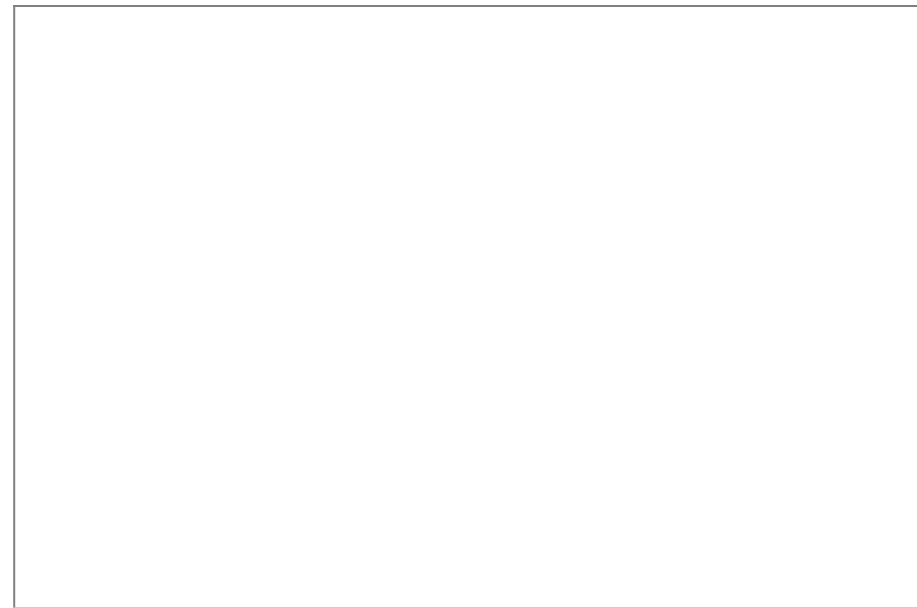




GROUND FLOOR



We warrant that the floor plan is a true and accurate representation of the property as shown in the photographs and the floor plan. We do not warrant that the floor plan is a true and accurate representation of the property as shown in the photographs and the floor plan. The floor plan is for information only and does not constitute an offer of any financial product. The floor plan is for information only and does not constitute an offer of any financial product. The floor plan is for information only and does not constitute an offer of any financial product.



9 Gatley Road, Cheadle, Cheshire SK8 1LY Tel. 0161 428 1488 Fax. 0161 428 1479
Email. mail@andrewdawson.co.uk